



Matthew G. Bevin
Governor

**COMMONWEALTH OF KENTUCKY
TRANSPORTATION CABINET**
Frankfort, Kentucky 40622
www.transportation.ky.gov/

Greg Thomas
Secretary

May 17, 2018

CALL NO. 105
CONTRACT ID NO. 181017
ADDENDUM # 1

Subject: MARSHALL COUNTY, STPE 6000(124)
Letting May 25, 2018

- (1) Revised - Proposal Bid Items - Pages 140-145 of 145
- (3) Revised - Plan Sheets- R2I, R4, R6, R9, R18M and General Notes

Proposal revisions are available at <http://transportation.ky.gov/Construction-Procurement/>.

If you have any questions, please contact us at 502-564-3500.

Sincerely,

A handwritten signature in cursive script that reads "Rachel Mills".

Rachel Mills, P.E.
Director
Division of Construction Procurement

RM:mr
Enclosures



An Equal Opportunity Employer M/F/D

PROPOSAL BID ITEMS

181017

Page 1 of 6

Report Date 5/17/18

Section: 0001 - PAVING

LINE	BID CODE	ALT	DESCRIPTION	QUANTITY	UNIT	UNIT PRIC	FP	AMOUNT
0010	00001		DGA BASE	8,107.00	TON		\$	
0020	00018		DRAINAGE BLANKET-TYPE II-ASPH	3,918.00	TON		\$	
0030	00100		ASPHALT SEAL AGGREGATE	7.00	TON		\$	
0040	00103		ASPHALT SEAL COAT	1.00	TON		\$	
0050	00190		LEVELING & WEDGING PG64-22	100.00	TON		\$	
0060	00214		CL3 ASPH BASE 1.00D PG64-22	9,272.00	TON		\$	
0070	00312		CL3 ASPH SURF 0.50D PG64-22	1,099.00	TON		\$	
0080	00324		CL3 ASPH SURF 0.50B PG64-22	2,703.00	TON		\$	
0090	00356		ASPHALT MATERIAL FOR TACK	4.00	TON		\$	
0100	02676		MOBILIZATION FOR MILL & TEXT	1.00	LS		\$	
0110	02677		ASPHALT PAVE MILLING & TEXTURING	706.00	TON		\$	
0120	23379EC		STAMPED CONCRETE	20.00	SQYD		\$	

Section: 0002 - ROADWAY

LINE	BID CODE	ALT	DESCRIPTION	QUANTITY	UNIT	UNIT PRIC	FP	AMOUNT
0130	00078		CRUSHED AGGREGATE SIZE NO 2	24.00	TON		\$	
0140	00441		ENTRANCE PIPE-18 IN	129.00	LF		\$	
0150	00443		ENTRANCE PIPE-24 IN	46.00	LF		\$	
0160	00464		CULVERT PIPE-24 IN	176.00	LF		\$	
0170	00522		STORM SEWER PIPE-18 IN	327.00	LF		\$	
0180	00524		STORM SEWER PIPE-24 IN	153.00	LF		\$	
0190	00528		STORM SEWER PIPE-36 IN	141.00	LF		\$	
0200	01000		PERFORATED PIPE-4 IN	10,171.00	LF		\$	
0210	01010		NON-PERFORATED PIPE-4 IN	250.00	LF		\$	
0220	01024		PERF PIPE HEADWALL TY 2-4 IN	5.00	EACH		\$	
0230	01028		PERF PIPE HEADWALL TY 3-4 IN	9.00	EACH		\$	
0240	01032		PERF PIPE HEADWALL TY 4-4 IN	11.00	EACH		\$	
0250	01204		PIPE CULVERT HEADWALL-18 IN	1.00	EACH		\$	
0260	01208		PIPE CULVERT HEADWALL-24 IN	5.00	EACH		\$	
0270	01212		PIPE CULVERT HEADWALL-36 IN	1.00	EACH		\$	
0280	01310		REMOVE PIPE	24.00	LF		\$	
0290	01433		SLOPED BOX OUTLET TYPE 1-18 IN	4.00	EACH		\$	
0300	01434		SLOPED BOX OUTLET TYPE 1-24 IN	2.00	EACH		\$	
0310	01456		CURB BOX INLET TYPE A	2.00	EACH		\$	
0320	01496		DROP BOX INLET TYPE 3	1.00	EACH		\$	
0330	01499		DROP BOX INLET TYPE 4	4.00	EACH		\$	
0340	01585		REMOVE DROP BOX INLET	1.00	EACH		\$	
0350	01650		JUNCTION BOX	3.00	EACH		\$	
0360	01711		FILL AND CAP WELL	3.00	EACH		\$	
0370	01811		STANDARD CURB AND GUTTER MOD	579.00	LF		\$	
0380	01885		LIP HEADER CURB	5,568.00	LF		\$	
0390	01891		ISLAND HEADER CURB TYPE 2	100.00	LF		\$	
0400	01947		MOUNTABLE MEDIAN TYPE 3A	99.00	SQYD		\$	
0410	01983		DELINEATOR FOR GUARDRAIL MONO DIRECTIONAL YELLOW	2.00	EACH		\$	

PROPOSAL BID ITEMS

REVISED ADDENDUM #1: 5-17-18

181017

Page 2 of 6

Report Date 5/17/18

LINE	BID CODE	ALT	DESCRIPTION	QUANTITY	UNIT	UNIT PRIC	FP	AMOUNT
0420	01987		DELINEATOR FOR GUARDRAIL BI DIRECTIONAL WHITE	8.00	EACH		\$	
0430	02014		BARRICADE-TYPE III	4.00	EACH		\$	
0440	02091		REMOVE PAVEMENT	1,612.00	SQYD		\$	
0450	02159		TEMP DITCH	4,220.00	LF		\$	
0460	02160		CLEAN TEMP DITCH	12,660.00	LF		\$	
0470	02203		STRUCTURE EXCAV-UNCLASSIFIED	1,823.00	CUYD		\$	
0480	02223		GRANULAR EMBANKMENT	1,800.00	CUYD		\$	
0490	02230		EMBANKMENT IN PLACE	70,531.00	CUYD		\$	
0500	02381		REMOVE GUARDRAIL	2,360.00	LF		\$	
0510	02390		TIMBER GUARD POST	106.00	EACH		\$	
0520	02483		CHANNEL LINING CLASS II	42.00	TON		\$	
0530	02484		CHANNEL LINING CLASS III	160.00	TON		\$	
0540	02545		CLEARING AND GRUBBING 22 ACRES	1.00	LS		\$	
0545	02555		CONCRETE-CLASS B (ADDED: 5-17-18)	493.00	CUYD		\$	
0550	02562		TEMPORARY SIGNS	93.00	SQFT		\$	
0560	02585		EDGE KEY	146.00	LF		\$	
0570	02596		FABRIC-GEOTEXTILE TYPE I	197.00	SQYD		\$	
0580	02599		FABRIC-GEOTEXTILE TYPE IV	5,760.00	SQYD		\$	
0590	02600		FABRIC GEOTEXTILE TY IV FOR PIPE	325.00	SQYD	\$2.00	\$	\$650.00
0600	02625		REMOVE HEADWALL	8.00	EACH		\$	
0610	02650		MAINTAIN & CONTROL TRAFFIC	1.00	LS		\$	
0620	02653		LANE CLOSURE	3.00	EACH		\$	
0630	02671		PORTABLE CHANGEABLE MESSAGE SIGN	2.00	EACH		\$	
0640	02690		SAFELOADING	19.00	CUYD		\$	
0650	02696		SHOULDER RUMBLE STRIPS	10,150.00	LF		\$	
0660	02701		TEMP SILT FENCE	11,870.00	LF		\$	
0670	02703		SILT TRAP TYPE A	8.00	EACH		\$	
0680	02704		SILT TRAP TYPE B	24.00	EACH		\$	
0690	02705		SILT TRAP TYPE C	9.00	EACH		\$	
0700	02706		CLEAN SILT TRAP TYPE A	24.00	EACH		\$	
0710	02707		CLEAN SILT TRAP TYPE B	72.00	EACH		\$	
0720	02708		CLEAN SILT TRAP TYPE C	27.00	EACH		\$	
0730	02726		STAKING	1.00	LS		\$	
0740	02775		ARROW PANEL	2.00	EACH		\$	
0750	02898		RELOCATE CRASH CUSHION	6.00	EACH		\$	
0755	02998		MASONRY COATING (ADDED: 5-17-18)	381.00	SQYD		\$	
0760	03171		CONCRETE BARRIER WALL TYPE 9T	20,466.00	LF		\$	
0770	03289		SIDEWALK RAMP TYPE 3	1.00	EACH		\$	
0780	04935		TEMP SIGNAL	1.00	LS		\$	
0790	05950		EROSION CONTROL BLANKET	66,127.00	SQYD		\$	
0800	05952		TEMP MULCH	66,127.00	SQYD		\$	
0810	05953		TEMP SEEDING AND PROTECTION	52,902.00	SQYD		\$	
0820	05963		INITIAL FERTILIZER	3.00	TON		\$	
0830	05964		20-10-10 FERTILIZER	4.00	TON		\$	
0840	05985		SEEDING AND PROTECTION	66,127.00	SQYD		\$	
0850	05990		SODDING	12,601.00	SQYD		\$	
0860	05992		AGRICULTURAL LIMESTONE	41.00	TON		\$	

PROPOSAL BID ITEMS

REVISED ADDENDUM #1: 5-17-18

181017

Page 3 of 6

Report Date 5/17/18

LINE	BID CODE	ALT	DESCRIPTION	QUANTITY	UNIT	UNIT PRIC	FP	AMOUNT
0870	06510		PAVE STRIPING-TEMP PAINT-4 IN	35,412.00	LF		\$	
0880	06514		PAVE STRIPING-PERM PAINT-4 IN	29,493.00	LF		\$	
0890	06515		PAVE STRIPING-PERM PAINT-6 IN	356.00	LF		\$	
0900	06517		PAVE STRIPING-PERM PAINT-12 IN	472.00	LF		\$	
0910	06550		PAVE STRIPING-TEMP REM TAPE-W	1,000.00	LF		\$	
0920	06551		PAVE STRIPING-TEMP REM TAPE-Y	1,000.00	LF		\$	
0930	06568		PAVE MARKING-THERMO STOP BAR-24IN	20.00	LF		\$	
0940	06574		PAVE MARKING-THERMO CURV ARROW	12.00	EACH		\$	
0950	08100		CONCRETE-CLASS A	3.20	CUYD		\$	
0960	08811		REMOVE BRIDGE RAIL BRIDGE RAIL BARRIER	380.00	LF		\$	
0970	10020NS		FUEL ADJUSTMENT	26,705.00	DOLL	\$1.00	\$	\$26,705.00
0980	10030NS		ASPHALT ADJUSTMENT	33,978.00	DOLL	\$1.00	\$	\$33,978.00
0990	20060ES719		GUARDRAIL STEEL W BEAM-S FACE CR	612.50	LF		\$	
1000	20062ES719		GUARDRAIL TERMINAL SECT NO.1 CR	2.00	EACH		\$	
1010	20318ES508		RELOCATE CONC BARRIER WALL	20,466.00	LF		\$	
1020	20738NS112		TEMP CRASH CUSHION	3.00	EACH		\$	
1030	21341ND		BOLLARDS	16.00	EACH		\$	
1040	22664EN		WATER BLASTING EXISTING STRIPE	500.00	LF		\$	
1050	23010EN		PAVE MARK TEMP PAINT STOP BAR-24 IN	24.00	LF		\$	
1060	23158ES505		DETECTABLE WARNINGS	36.00	SQFT		\$	
1070	23275EN11F		TURF REINFORCEMENT MAT 2	3,745.00	SQYD		\$	
1080	23610NC		CORED HOLE DRAINAGE BOX CON	2.00	EACH		\$	
1090	24489EC		INLAID PAVEMENT MARKER	215.00	EACH		\$	
1100	24787EN		SHEET PILING	800.00	SQFT		\$	
1110	24814EC		PIPELINE INSPECTION	735.00	LF		\$	
1120	24974ED		WOODEN GUARDRAIL	25.00	LF		\$	
1130	24976EC		GUARDRAIL CONNECTOR TO BR END TY A CR	4.00	EACH		\$	
1140	24977EC		GUARDRAIL END TREATMENT TYPE 1 CR	4.00	EACH		\$	
1150	40027		ROCK EXCAVATION	155.00	CUYD		\$	

Section: 0003 - BRIDGE- 11401

LINE	BID CODE	ALT	DESCRIPTION	QUANTITY	UNIT	UNIT PRIC	FP	AMOUNT
1160	03300		ELIMINATE TRANSVERSE JOINT	128.70	LF		\$	
1170	08104		CONCRETE-CLASS AA	29.80	CUYD		\$	
1180	08151		STEEL REINFORCEMENT-EPOXY COATED	2,332.00	LB		\$	
1190	08256		HANDRAIL-METAL	380.00	LF		\$	
1200	08504		EPOXY SAND SLURRY	49.30	SQYD		\$	
1210	08526		CONC CLASS M FULL DEPTH PATCH	3.13	CUYD		\$	
1220	08534		CONCRETE OVERLAY-LATEX	21.90	CUYD		\$	
1230	08549		BLAST CLEANING	687.00	SQYD		\$	
1240	08551		MACHINE PREP OF SLAB	629.70	SQYD		\$	
1250	22146EN		CONCRETE PATCHING REPAIR	104.00	SQFT		\$	
1260	23879EC		ACRYLIC GLASS	80.00	SQFT		\$	
1270	24971ED		PRECAST CONCRETE CAPS	1.00	LS		\$	

PROPOSAL BID ITEMS

181017

Page 4 of 6

Report Date 5/17/18

Section: 0004 - BRIDGE- 27739

LINE	BID CODE	ALT	DESCRIPTION	QUANTITY	UNIT	UNIT PRIC	FP	AMOUNT
1280	02231		STRUCTURE GRANULAR BACKFILL	56.20	CUYD		\$	
1290	08001		STRUCTURE EXCAVATION-COMMON	39.80	CUYD		\$	
1300	08019		CYCLOPEAN STONE RIP RAP	845.00	TON		\$	
1310	08100		CONCRETE-CLASS A	51.80	CUYD		\$	
1320	08150		STEEL REINFORCEMENT	5,752.00	LB		\$	
1330	24807ED		PIPE PILE-12 IN	723.00	LF		\$	
1340	24971ED		PRECAST CONCRETE CAPS	1.00	LS		\$	
1350	24972ED		PREFABRICATED ALUMINUM TRUSS BRIDGE	1.00	EACH		\$	

Section: 0005 - BRIDGE- 27740

LINE	BID CODE	ALT	DESCRIPTION	QUANTITY	UNIT	UNIT PRIC	FP	AMOUNT
1360	02403		REMOVE CONCRETE MASONRY	22.00	CUYD		\$	
1370	08003		FOUNDATION PREPARATION	1.00	LS		\$	
1380	08100		CONCRETE-CLASS A	98.60	CUYD		\$	
1390	08150		STEEL REINFORCEMENT	14,382.00	LB		\$	

Section: 0006 - BRIDGE- 27741

LINE	BID CODE	ALT	DESCRIPTION	QUANTITY	UNIT	UNIT PRIC	FP	AMOUNT
1400	02403		REMOVE CONCRETE MASONRY	16.20	CUYD		\$	
1410	08003		FOUNDATION PREPARATION	1.00	LS		\$	
1420	08100		CONCRETE-CLASS A	76.70	CUYD		\$	
1430	08150		STEEL REINFORCEMENT	8,803.00	LB		\$	

Section: 0007 - SIGNING

LINE	BID CODE	ALT	DESCRIPTION	QUANTITY	UNIT	UNIT PRIC	FP	AMOUNT
1440	06406		SBM ALUM SHEET SIGNS .080 IN	504.00	SQFT		\$	
1450	06410		STEEL POST TYPE 1	32.00	LF		\$	
1460	06411		STEEL POST TYPE 2	1,135.00	LF		\$	
1470	20418ED		REMOVE & RELOCATE SIGNS	8.00	EACH		\$	
1480	21373ND		REMOVE SIGN	3.00	EACH		\$	
1490	24631EC		BARCODE SIGN INVENTORY	76.00	EACH		\$	
1500	30012		MILE MARKER	2.00	EACH		\$	

Section: 0008 - LANDSCAPING

LINE	BID CODE	ALT	DESCRIPTION	QUANTITY	UNIT	UNIT PRIC	FP	AMOUNT
1510	02019		JPC PAVEMENT-4 IN/24 (REVISED: 5-17-18)	200.00	SQYD		\$	
1520	02819		PARK BENCH	6.00	EACH		\$	

PROPOSAL BID ITEMS

181017

Page 5 of 6

Report Date 5/17/18

LINE	BID CODE	ALT	DESCRIPTION	QUANTITY	UNIT	UNIT PRIC	FP	AMOUNT
1530	02820		TRASH BASKET-SINGLE	3.00	EACH		\$	
1540	20000ES724		TREE AMERICAN SYCAMORE (PLANTANUS OCCIDENTALIS)	11.00	EACH		\$	
1550	20000ES724		TREE 'BRACKENS BROWN BEUATY' SOUTHER MAGNOLIA	18.00	EACH		\$	
1560	20000ES724		TREE BUR OAK (QUERCUS MACROCARPA)	11.00	EACH		\$	
1570	20000ES724		TREE CHERRY BARK OAK (QUERCUS PAGODA)	3.00	EACH		\$	
1580	20000ES724		TREE 'CHIEF PADUKE' AMERICAN HOLLY (ILEX OPACA 'CHIEF PADUKE')	10.00	EACH		\$	
1590	20000ES724		TREE DOWN SERVICEBERRY	21.00	EACH		\$	
1600	20000ES724		TREE HEDGE MAPLE (ACER CAMPESTRE)	6.00	EACH		\$	
1610	20000ES724		TREE HERITAGE RIVER BIRCH (BETULA NIGRA 'HERITAGE)	51.00	EACH		\$	
1620	20000ES724		TREE LOBLOLLY PINE (PINUS TAEDA)	21.00	EACH		\$	
1630	20000ES724		TREE LONDON PLANE TREE (PLANTANUS X ACERIFOLIA)	3.00	EACH		\$	
1640	20000ES724		TREE 'NATCHEZ' CRAPE MYRTLE (LAGERSTROEMIA 'NATCHEZ)	53.00	EACH		\$	
1650	20000ES724		TREE NORWAY SPRUCE (PICEA ABIES)	5.00	EACH		\$	
1660	20000ES724		TREE 'OKAME' FLOWERING CHERRY (PRUNUS 'OKAME')	18.00	EACH		\$	
1670	20000ES724		TREE 'RED RAGE' BLACK GUM/TUPELO (NYSSA SYLVATICA 'RED RAGE')	16.00	EACH		\$	
1680	20000ES724		TREE 'ROTUNDILOBA' SWEETGUM (LIQUIDAMBAR STYRACIFLUA 'ROTUNDILOBA)	3.00	EACH		\$	
1690	20000ES724		TREE SAUCER MAGNOLIA (MAGNOLIA X SOULANGEANA)	8.00	EACH		\$	
1700	20000ES724		TREE SEVEN SON FLOWER (HEPTACODIUM MICONIODES)PAR	5.00	EACH		\$	
1710	20000ES724		TREE SUGAR MAPLE (ACER SACCHARUM)	14.00	EACH		\$	
1720	20000ES724		TREE WHITE OAK (QUERCUS ALBA)	8.00	EACH		\$	
1730	20014ES724		EASTERN REDBUD	5.00	EACH		\$	
1740	20051ES724		BALD CYPRESS	18.00	EACH		\$	
1750	20516NS724		TULIP POPLAR	8.00	EACH		\$	
1760	23315EC		DECORATIVE FENCE	2,071.00	LF		\$	
1770	23319EC		HARDWOOD MULCH	2,349.00	SQYD		\$	
1780	23492EC		DECORATIVE FENCE-3 RAIL	204.00	LF		\$	

PROPOSAL BID ITEMS

Report Date 5/17/18

Page 6 of 6

181017

LINE	BID CODE	ALT	DESCRIPTION	QUANTITY	UNIT	UNIT PRIC	FP	AMOUNT
1790	23646EC		CONTAINER PLANTS 'AUTUMN JOY' SEDUM (SEDUM TELEPHIUM 'AUTUMN JOY')	36.00	EACH		\$	
1800	23646EC		CONTAINER PLANTS 'EAST FRIESLAND' MEADOW SAGE	54.00	EACH		\$	
1810	23646EC		CONTAINER PLANTS 'EL DORADO' FEATHER REEDGRASS	40.00	EACH		\$	
1820	23646EC		CONTAINER PLANTS 'GOLDSTRUM' BLACK-EYED SUSAN	136.00	EACH		\$	
1830	23646EC		CONTAINER PLANTS 'GREY OWL' EASTERN RED CEDAR	82.00	EACH		\$	
1840	23646EC		CONTAINER PLANTS JAPANESE SILVERGRASS (MISCANTHUS SINENSIS 'VARIEGATUS')	10.00	EACH		\$	
1850	23646EC		CONTAINER PLANTS 'JIM DANDY' WINTERBERRY HOLLY (MALE) (ILEX VERTICILLATA)	4.00	EACH		\$	
1860	23646EC		CONTAINER PLANTS 'KARL FOERSTER' FEATHER REEDGRASS	216.00	EACH		\$	
1870	23646EC		CONTAINER PLANTS KOREANSPICE VIBURNUM (VIBURNUM CARLESII)	24.00	EACH		\$	
1880	23646EC		CONTAINER PLANTS 'LITTLE BUNNY' DWARF FOUNTAIN GRASS	139.00	EACH		\$	
1890	23646EC		CONTAINER PLANTS 'LITTLE SPIRE' RUSSIAN SAGE	103.00	EACH		\$	
1900	23646EC		CONTAINER PLANTS PRAIRIE DROPSEED (SPOROBOLUS HETEROLEPSIS)	162.00	EACH		\$	
1910	23646EC		CONTAINER PLANTS RED CHOKEBERRY (ARONIA ARBUTIFOLIA 'BRILLIANTISSIMA')	44.00	EACH		\$	
1920	23646EC		CONTAINER PLANTS 'RED SPRITE' WINTERBERRY HOLLY (FEMALE)	40.00	EACH		\$	
1930	23646EC		CONTAINER PLANTS 'RUBY SLIPPERS' OAKLEAF HYDRANGEA	30.00	EACH		\$	
1940	23646EC		CONTAINER PLANTS RUSSIAN SAGE (PEROVSKIA ATROPICIFOLIA)	420.00	EACH		\$	
1950	23646EC		CONTAINER PLANTS SPREADING LILYTURF/LIRIOPE (LIRIOPE SPICATA)	283.00	EACH		\$	
1960	24973ED		PEDESTRIAN/BIKE SHELTER	3.00	EACH		\$	
1970	24975ED		LANDSCAPE COBBLE STONE	1.00	TON		\$	
1980	30020		BIKE RACK	3.00	EACH		\$	

Section: 0009 - DEMOBILIZATION AND/OR MOBILIZATION

LINE	BID CODE	ALT	DESCRIPTION	QUANTITY	UNIT	UNIT PRIC	FP	AMOUNT
1990	02568		MOBILIZATION	1.00	LS		\$	
2000	02569		DEMOBILIZATION	1.00	LS		\$	

GENERAL SUMMARY

ITEM	DESCRIPTION	UNIT	US 62	MULTI-USE PATH	PROJECT TOTAL
	ROADWAY				
10020NS	FUEL ADJUSTMENT	DOLLAR			26,705
10030NS	ASPHALT ADJUSTMENT	DOLLAR			33,978
1310	REMOVE PIPE	LF	24	0	24
1711	FILL AND CAP WELL	① EACH	3	0	3
1811	STANDARD CURB AND GUTTER MODIFIED	⑨ LF	579	0	579
1885	LIP HEADER CURB	LF	5568	0	5568
1891	ISLAND HEADER CURB TYPE 2	LF	100	0	100
1947	MOUNTABLE MEDIAN TYPE 3A	SY	99	0	99
1983	DELINEATOR FOR GUARDRAIL M/Y	EACH	2	0	2
1987	DELINEATOR FOR GUARDRAIL B/W	EACH	8	0	8
2019	JPC PAVEMENT -4 IN/24	S0 YD	0	200	200
2091	REMOVE PAVEMENT	S0 YD	1612	0	1612
2203	STRUCTURE EXCAVATION- UNCLASSIFIED	⑩ CU YD	1823	0	1823
2223	GRANULAR EMBANKMENT	⑤ CU YD	1800	0	1800
2230	EMBANKMENT IN PLACE	③ CU YD	70531	0	70531
2134IND	BOLLARDS	EACH	0	16	16
23158ES505	DETECTABLE WARNINGS	SF	0	36	36
24787EN	SHEET PILING	SF	800	0	800
20060ES179	GUARDRAIL STEEL W BEAM S FACE CR	LF	612.5	0	612.5
20062ES179	GUARDRAIL TERMINAL SECTION No. 1 CR	EACH	2	0	2
24976EC	GUARDRAIL CONNECTOR TO BRIDGE END TY A CR	EACH	4	0	4
24977EC	GUARDRAIL END TREATMENT TYPE 1 CR	EACH	4	0	4
2390	TIMBER GUARD POST	EACH	106	0	106
2381	REMOVE GUARDRAIL	④ LF	2360	0	2360
23275ENIF	TURF REINFORCEMENT MAT 2	S0 YD	3745	0	3745
23379EC	STAMPED CONCRETE	S0 YD	20	0	20
24544EC	REMOVE BRIDGE (RAIL) BARRIER	LF	380	0	380
24814EC	PIPELINE INSPECTION	LF	735	0	735
24974ED	WOODEN GUARDRAIL	LF	25	0	25
2545	CLEARING AND GRUBBING	⑦ LS	1	0	1
2555	CLASS B CONCRETE	⑮ CU YD	493	0	493
2568	MOBILIZATION	LS	1	0	1
2569	DEMOBILIZATION	LS	1	0	1
2585	EDGE KEY	LF	146	0	146
2596	FABRIC-GEOTEXTILE TYPE I	S0 YD	⑨ 194	3	197
2599	FABRIC-GEOTEXTILE TYPE IV	⑩ S0 YD	5760	0	5760
2600	FABRIC-GEOTEXTILE TYPE IV FOR PIPE	S0 YD	325	0	325
2696	SHOULDER RUMBLE STRIPS - SAWED	LF	10150	0	10150
2726	STAKING	LS	1	0	1
2998	MASONRY COATING	SY	381	0	381
3289	SIDEWALK RAMP TYPE 3	⑧ EACH	0	1	1
40027	ROCK EXCAVATION	CU YD	155	0	155

FILE NAME: C:\PW\WORKDIR\DM507570\21-2\GENERAL SUMMARY.DGN

USF2: m10ne DATE PLOTTED: May 16, 2018

E-SHEET NAME: Power InRoads v8.11.9.397

GENERAL SUMMARY

ITEM	DESCRIPTION	UNIT	US 62	MULTI-USE PATH	PROJECT TOTAL
	MAINTENANCE OF TRAFFIC				
02014	BARRICADE TYPE III	EACH	4	0	4
03171	CONC. BARRIER WALL 9T	LF	20466	0	20466
20318ES508	RELOCATE CONCRETE BARRIER WALL	LF	20466	0	20466
20738NS12	TEMP CRASH CUSHION	EACH	3	0	3
2562	TEMPORARY SIGNS	⑪ S0 FT	93	0	93
2650	MAINTAIN AND CONTROL TRAFFIC	⑫ LS	1	0	1
2653	LANE CLOSURE	EACH	3	0	3
2671	PORTABLE CHANGEABLE MESSAGE SIGN	⑬ EACH	2	0	2
2775	ARROW PANEL	⑭ EACH	2	0	2
2898	RELOCATE CRASH CUSHION	EACH	6	0	6
4935	TEMPORARY SIGNAL	⑯ LS	1	0	1
6510	PAVE STRIPING - TEMP PAINT - 4 IN	LF	35412	0	35412
6550	PAVE STRIPING - TEMP REM TAPE-W	LF	1000	0	1000
6551	PAVE STRIPING - TEMP REM TAPE-Y	LF	1000	0	1000
23010EN	PAVE MARK TEMP PAINT STOP BAR-24 INCH	LF	24	0	24
22664EN	WATER BLASTING EXISTING STRIPE	LF	500	0	500
	EROSION CONTROL ITEMS				
2159	TEMPORARY DITCH	LF	4220	0	4220
2160	CLEAN TEMPORARY DITCH	LF	12660	0	12660
2701	TEMP SILT FENCE	LF	11870	0	11870
2703	SILT TRAP TYPE A	EACH	8	0	8
2704	SILT TRAP TYPE B	EACH	24	0	24
2705	SILT TRAP TYPE C	EACH	9	0	9
2706	CLEAN SILT TRAP TYPE A	EACH	24	0	24
2707	CLEAN SILT TRAP TYPE B	EACH	72	0	72
2708	CLEAN SILT TRAP TYPE C	EACH	27	0	27
5950	EROSION CONTROL BLANKET	S0 YD	66127	0	66127
5952	TEMPORARY MULCH	S0 YD	66127	0	66127
5953	TEMP SEEDING AND PROTECTION	S0 YD	52902	0	52902
5963	INITIAL FERTILIZER	TON	3	0	3
5964	20-10-10 FERTILIZER	TON	4	0	4
5985	SEEDING AND PROTECTION	S0 YD	66127	0	66127
5990	SODDING	⑰ S0 YD	12601	0	12601
5992	AGRICULTURAL LIMESTONE	TON	41	0	41

EXCAVATION

52,650 CU YD EXCAVATION
 11,906 CU YD EMB BENCHING
 155 CU YD ROCK EXCAVATION
 2,732 CU YD SURFACE DITCHES
 1,823 CU YD STRUCTURE EXCAVATION

 69,266 CU YD TOTAL EXCAVATION

EMBANKMENT

58,625 CU YD EMBANKMENT
 11,906 CU YD EMB BENCHING

 70,531 CU YD TOTAL EMBANKMENT
 1,265 CU YD BORROW

 70,531 CU YD TOTAL EMBANKMENT

ESTIMATE FOR EARTHWORK CALCULATIONS FOR DESIGN ONLY. THE CONTRACTOR IS ADVISED THAT THE EARTHWORK CALCULATIONS SHOWN ARE FOR INFORMATION ONLY. ASSUMPTIONS FOR SHRINKAGE AND SWELL FACTORS ARE THE CONTRACTOR'S RESPONSIBILITY.

GENERAL SUMMARY

COUNTY OF	ITEM NO.	SHEET NO.
MARSHALL	01-3016.00	R21

REVISED: 5-16-18

NOTES:

- ACCORDING TO KGS RECORDS, THE EXISTING MONITORING WELLS HAVE BEEN PROPERLY PLUGGED & ABANDONED AS PER THE KYTC SPECIFICATIONS. THE CONTRACTOR WILL VERIFY AT THE DIRECTION OF THE ENGINEER.
- NOT USED
- INCLUDES 11,906 CU. YD. TO REPLACE EMB. BENCHES.
- EXISTING GUARDRAIL SHALL BE DISSASSEMBLED, REMOVED, AND TRANSPORTED TO THE MARSHALL COUNTY MAINTENANCE STORAGE FACILITY IN BENTON AS DIRECTED BY THE ENGINEER AND REMAIN THE PROPERTY OF THE STATE.
- FOR WORKING PLATFORMS AS SPECIFIED IN GEOTECHNICAL NOTE 10. CONTRARY TO THE SPECIFICATION FOR THIS ITEM, CRUSHED AGGREGATES No. 2's, 3's, OR 2 1/2's SHALL BE USED AS SPECIFIED IN GEOTECHNICAL NOTE 10.
- NOT USED
- ESTIMATED @ 22 ACRES.
- ASPHALT RAMP.
- CARRIED OVER FROM PIPE SUMMARY. FOR DITCHES AND PIPE OUTLETS.
- 5760 SY FOR CONSTRUCTION OF WORKING PLATFORMS.
- TEMPORARY SIGNS USED FOR MAINTENANCE OF TRAFFIC TO REMAIN THE PROPERTY OF THE CONTRACTOR.
- THE CONTRACTOR SHALL PROVIDE KYTC WITH CONTACT INFORMATION FOR THE PERSON RESPONSIBLE FOR THE TRAFFIC CONTROL.
- KYTC WILL ASSUME OWNERSHIP OF THE PORTABLE CHANGEABLE MESSAGE BOARDS ON THIS PROJECT. THE CONTRACTOR WILL PURCHASE NEW UNITS FOR THE PROJECT AND UPON IMMEDIATE COMPLETION OF THE PROJECT, DELIVER THE MESSAGE BOARDS TO THE MARSHALL COUNTY MAINTENANCE FACILITY.
- KYTC WILL ASSUME OWNERSHIP OF THE ARROW PANELS ON THIS PROJECT. THE CONTRACTOR WILL PURCHASE NEW UNITS FOR THE PROJECT AND UPON IMMEDIATE COMPLETION OF THE PROJECT, DELIVER THE MESSAGE BOARDS TO THE MARSHALL COUNTY MAINTENANCE FACILITY.
- CONCRETE FOR GRAVITY TYPE RETAINING WALL.
- FOR GRAVITY TYPE RETAINING WALLS.
- INCLUDES 330 SY BEHIND CURB AND GUTTER & 139 SY BETWEEN PATH AND GRAVITY TYPE RETAINING WALL MODIFIED.
- INCLUDES 2 TEMPORARY SIGNALS & ALL COSTS FOR INSTALLATION, MAINTAINING, REPOSITIONING, AND REMOVING THE TEMPORARY SIGNALS. WHEN NO LONGER NEEDED, THE SIGNAL WILL BE REMOVED REMAIN THE PROPERTY OF THE CONTRACTOR.
- MODIFIED FOR 9.25' DEPTH.

GENERAL SUMMARY

GENERAL SUMMARY

ITEM	DESCRIPTION	UNIT	US 62	MULTI-USE PATH	PROJECT TOTAL
ROADWAY					
10020NS	FUEL ADJUSTMENT	DOLLAR			26,705
10030NS	ASPHALT ADJUSTMENT	DOLLAR			33,978
1310	REMOVE PIPE	LF	24	0	24
1711	FILL AND CAP WELL	① EACH	3	0	3
1811	STANDARD CURB AND GUTTER MODIFIED	⑨ LF	579	0	579
1885	LIP HEADER CURB	LF	5568	0	5568
1891	ISLAND HEADER CURB TYPE 2	LF	100	0	100
1947	MOUNTABLE MEDIAN TYPE 3A	SY	99	0	99
1983	DELINEATOR FOR GUARDRAIL M/Y	EACH	2	0	2
1987	DELINEATOR FOR GUARDRAIL B/W	EACH	8	0	8
2019	JPC PAVEMENT - 4 IN/24	SQ YD	0	200	200
2094	REMOVE PAVEMENT	SQ YD	1612	0	1612
2203	STRUCTURE EXCAVATION- UNCLASSIFIED	⑬ CU YD	1823	0	1823
2223	GRANULAR EMBANKMENT	⑤ CU YD	1800	0	1800
2230	EMBANKMENT IN PLACE	③ CU YD	70531	0	70531
2134IND	BOLLARDS	EACH	0	16	16
23158ES505	DETECTABLE WARNINGS	SF	0	36	36
24787EN	SHEET PILING	SF	800	0	800
20060ES179	GUARDRAIL STEEL W BEAM S FACE CR	LF	612.5	0	612.5
20062ES179	GUARDRAIL TERMINAL SECTION No. 1 CR	EACH	2	0	2
24976EC	GUARDRAIL CONNECTOR TO BRIDGE END TY A CR	EACH	4	0	4
24977EC	GUARDRAIL END TREATMENT TYPE 1 CR	EACH	4	0	4
2390	TIMBER GUARD POST	EACH	106	0	106
2381	REMOVE GUARDRAIL	④ LF	2360	0	2360
23275ENIF	TURF REINFORCEMENT MAT 2	SQ YD	3745	0	3745
23379EC	STAMPED CONCRETE	SQ YD	20	0	20
24544EC	REMOVE BRIDGE (RAIL) BARRIER	LF	380	0	380
24814EC	PIPELINE INSPECTION	LF	735	0	735
24974ED	WOODEN GUARDRAIL	LF	25	0	25
2545	CLEARING AND GRUBBING	⑦ LS	1	0	1
2555	CLASS B CONCRETE	⑮ CU YD	493	0	493
2568	MOBILIZATION	LS	1	0	1
2569	DEMobilIZATION	LS	1	0	1
2585	EDGE KEY	LF	146	0	146
2596	FABRIC-GEOTEXTILE TYPE I	SQ YD	⑨ 194	3	197
2599	FABRIC-GEOTEXTILE TYPE IV	⑩ SQ YD	5760	0	5760
2600	FABRIC-GEOTEXTILE TYPE IV FOR PIPE	SQ YD	325	0	325
2696	SHOULDER RUMBLE STRIPS - SAWED	LF	10150	0	10150
2726	STAKING	LS	1	0	1
2998	MASONRY COATING	SY	381	0	381
3289	SIDEWALK RAMP TYPE 3	⑧ EACH	0	1	1
40027	ROCK EXCAVATION	CU YD	155	0	155

GENERAL SUMMARY

ITEM	DESCRIPTION	UNIT	US 62	MULTI-USE PATH	PROJECT TOTAL
MAINTENANCE OF TRAFFIC					
02014	BARRICADE TYPE III	EACH	4	0	4
03171	CONC. BARRIER WALL 9T	LF	20466	0	20466
20318ES508	RELOCATE CONCRETE BARRIER WALL	LF	20466	0	20466
20738NSI2	TEMP CRASH CUSHION	EACH	3	0	3
2562	TEMPORARY SIGNS	⑪ SQ FT	93	0	93
2650	MAINTAIN AND CONTROL TRAFFIC	⑫ LS	1	0	1
2653	LANE CLOSURE	EACH	3	0	3
2671	PORTABLE CHANGEABLE MESSAGE SIGN	⑬ EACH	2	0	2
2775	ARROW PANEL	⑭ EACH	2	0	2
2898	RELOCATE CRASH CUSHION	EACH	6	0	6
4935	TEMPORARY SIGNAL	⑯ LS	1	0	1
6510	PAVE STRIPING - TEMP PAINT - 4 IN	LF	35412	0	35412
6550	PAVE STRIPING - TEMP REM TAPE-W	LF	1000	0	1000
6551	PAVE STRIPING - TEMP REM TAPE-Y	LF	1000	0	1000
23010EN	PAVE MARK TEMP PAINT STOP BAR-24 INCH	LF	24	0	24
22664EN	WATER BLASTING EXISTING STRIPE	LF	500	0	500
EROSION CONTROL ITEMS					
2159	TEMPORARY DITCH	LF	4220	0	4220
2160	CLEAN TEMPORARY DITCH	LF	12660	0	12660
2701	TEMP SILT FENCE	LF	11870	0	11870
2703	SILT TRAP TYPE A	EACH	8	0	8
2704	SILT TRAP TYPE B	EACH	24	0	24
2705	SILT TRAP TYPE C	EACH	9	0	9
2706	CLEAN SILT TRAP TYPE A	EACH	24	0	24
2707	CLEAN SILT TRAP TYPE B	EACH	72	0	72
2708	CLEAN SILT TRAP TYPE C	EACH	27	0	27
5950	EROSION CONTROL BLANKET	SQ YD	66127	0	66127
5952	TEMPORARY MULCH	SQ YD	66127	0	66127
5953	TEMP SEEDING AND PROTECTION	SQ YD	52902	0	52902
5963	INITIAL FERTILIZER	TON	3	0	3
5964	20-10-10 FERTILIZER	TON	4	0	4
5985	SEEDING AND PROTECTION	SQ YD	66127	0	66127
5990	SODDING	⑰ SQ YD	12601	0	12601
5992	AGRICULTURAL LIMESTONE	TON	41	0	41

EXCAVATION

52,650 CU YD EXCAVATION
 11,906 CU YD EMB BENCHING
 155 CU YD ROCK EXCAVATION
 2,732 CU YD SURFACE DITCHES
 1,823 CU YD STRUCTURE EXCAVATION

EMBANKMENT

58,625 CU YD EMBANKMENT
 11,906 CU YD EMB BENCHING
 69,266 CU YD TOTAL EXCAVATION
 70,531 CU YD TOTAL EMBANKMENT
 1,265 CU YD BORROW
 70,531 CU YD TOTAL EMBANKMENT

ESTIMATE FOR EARTHWORK CALCULATIONS FOR DESIGN ONLY. THE CONTRACTOR IS ADVISED THAT THE EARTHWORK CALCULATIONS SHOWN ARE FOR INFORMATION ONLY. ASSUMPTIONS FOR SHRINKAGE AND SWELL FACTORS ARE THE CONTRACTOR'S RESPONSIBILITY.

GENERAL SUMMARY

COUNTY OF	ITEM NO.	SHEET NO.
MARSHALL	01-3016.00	R21

REVISED: 5-16-18

NOTES:

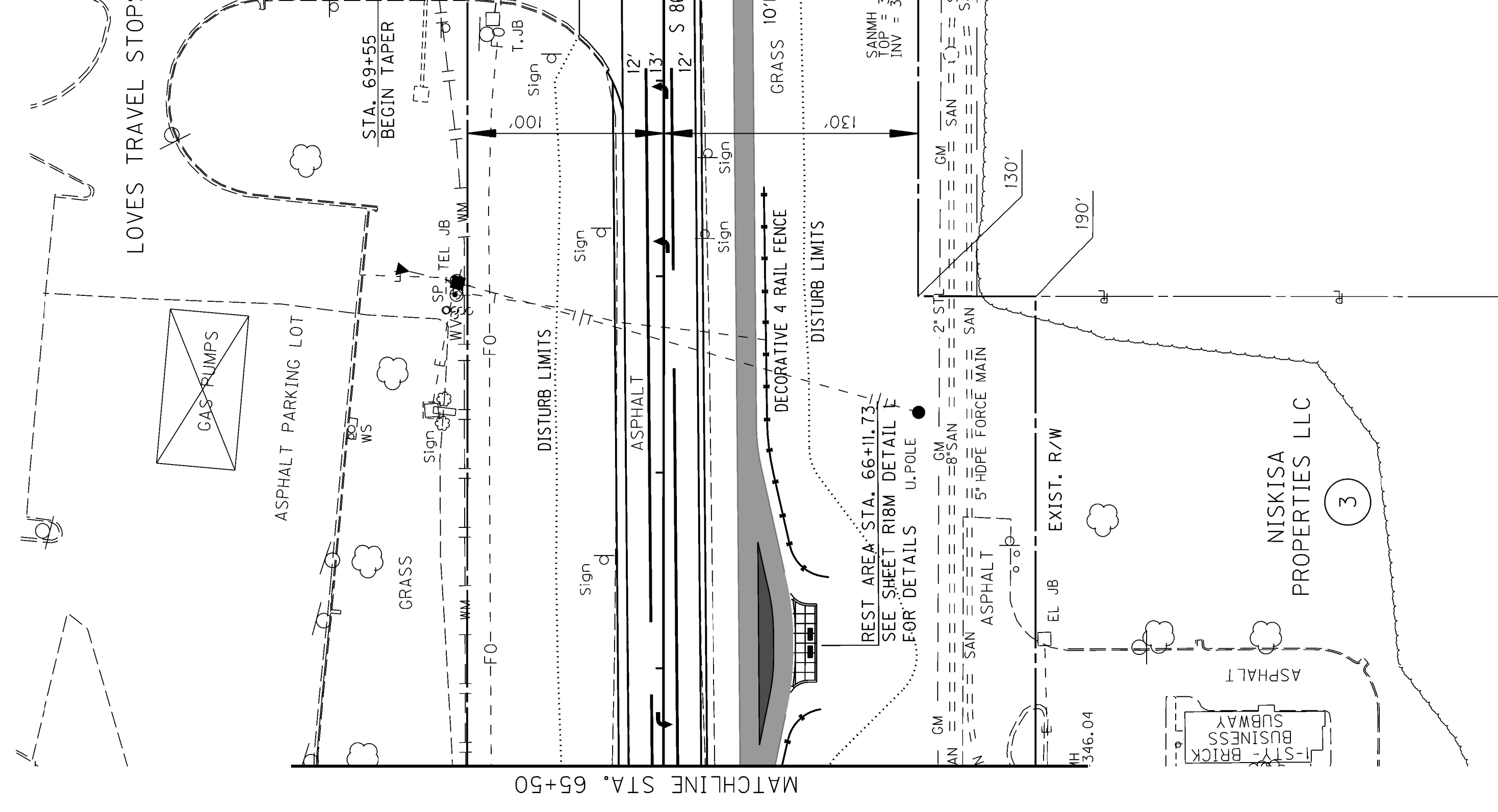
- ACCORDING TO KGS RECORDS, THE EXISTING MONITORING WELLS HAVE BEEN PROPERLY PLUGGED & ABANDONED AS PER THE KYTC SPECIFICATIONS. THE CONTRACTOR WILL VERIFY AT THE DIRECTION OF THE ENGINEER.
- NOT USED
- INCLUDES 11,906 CU. YD. TO REPLACE EMB. BENCHES.
- EXISTING GUARDRAIL SHALL BE DISSASSEMBLED, REMOVED, AND TRANSPORTED TO THE MARSHALL COUNTY MAINTENANCE STORAGE FACILITY IN BENTON AS DIRECTED BY THE ENGINEER AND REMAIN THE PROPERTY OF THE STATE.
- FOR WORKING PLATFORMS AS SPECIFIED IN GEOTECHNICAL NOTE 10. CONTRARY TO THE SPECIFICATION FOR THIS ITEM, CRUSHED AGGREGATES No. 2's, 3's, OR 2 1/2's SHALL BE USED AS SPECIFIED IN GEOTECHNICAL NOTE 10.
- NOT USED
- ESTIMATED @ 22 ACRES.
- ASPHALT RAMP.
- CARRIED OVER FROM PIPE SUMMARY. FOR DITCHES AND PIPE OUTLETS.
- 5760 SY FOR CONSTRUCTION OF WORKING PLATFORMS.
- TEMPORARY SIGNS USED FOR MAINTENANCE OF TRAFFIC TO REMAIN THE PROPERTY OF THE CONTRACTOR.
- THE CONTRACTOR SHALL PROVIDE KYTC WITH CONTACT INFORMATION FOR THE PERSON RESPONSIBLE FOR THE TRAFFIC CONTROL.
- KYTC WILL ASSUME OWNERSHIP OF THE PORTABLE CHANGEABLE MESSAGE BOARDS ON THIS PROJECT. THE CONTRACTOR WILL PURCHASE NEW UNITS FOR THE PROJECT AND UPON IMMEDIATE COMPLETION OF THE PROJECT, DELIVER THE MESSAGE BOARDS TO THE MARSHALL COUNTY MAINTENANCE FACILITY.
- KYTC WILL ASSUME OWNERSHIP OF THE ARROW PANELS ON THIS PROJECT. THE CONTRACTOR WILL PURCHASE NEW UNITS FOR THE PROJECT AND UPON IMMEDIATE COMPLETION OF THE PROJECT, DELIVER THE MESSAGE BOARDS TO THE MARSHALL COUNTY MAINTENANCE FACILITY.
- CONCRETE FOR GRAVITY TYPE RETAINING WALL.
- FOR GRAVITY TYPE RETAINING WALLS.
- INCLUDES 330 SY BEHIND CURB AND GUTTER & 139 SY BETWEEN PATH AND GRAVITY TYPE RETAINING WALL MODIFIED.
- INCLUDES 2 TEMPORARY SIGNALS & ALL COSTS FOR INSTALLATION, MAINTAINING, REPOSITIONING, AND REMOVING THE TEMPORARY SIGNALS. WHEN NO LONGER NEEDED, THE SIGNAL WILL BE REMOVED REMAIN THE PROPERTY OF THE CONTRACTOR.
- MODIFIED FOR 9.25' DEPTH.

GENERAL SUMMARY

DITCH CONSTRUCTION CHART				
SIDE	STA. TO STA.	DESCRIPTION	QUANTITY	D T
LT	65+50 TO 69+00	V DT.	583 SY	1.00
		EC BLANKET		

70+00

LT. STA. 69+66 OVERLAY .67' ENTRANCE W/
20 TONS OF ASPHALT SURFACE



LOVES TRAVEL STOPS AND COUNTRY STORE INC.

NISKISA PROPERTIES LLC

(2)

(3)

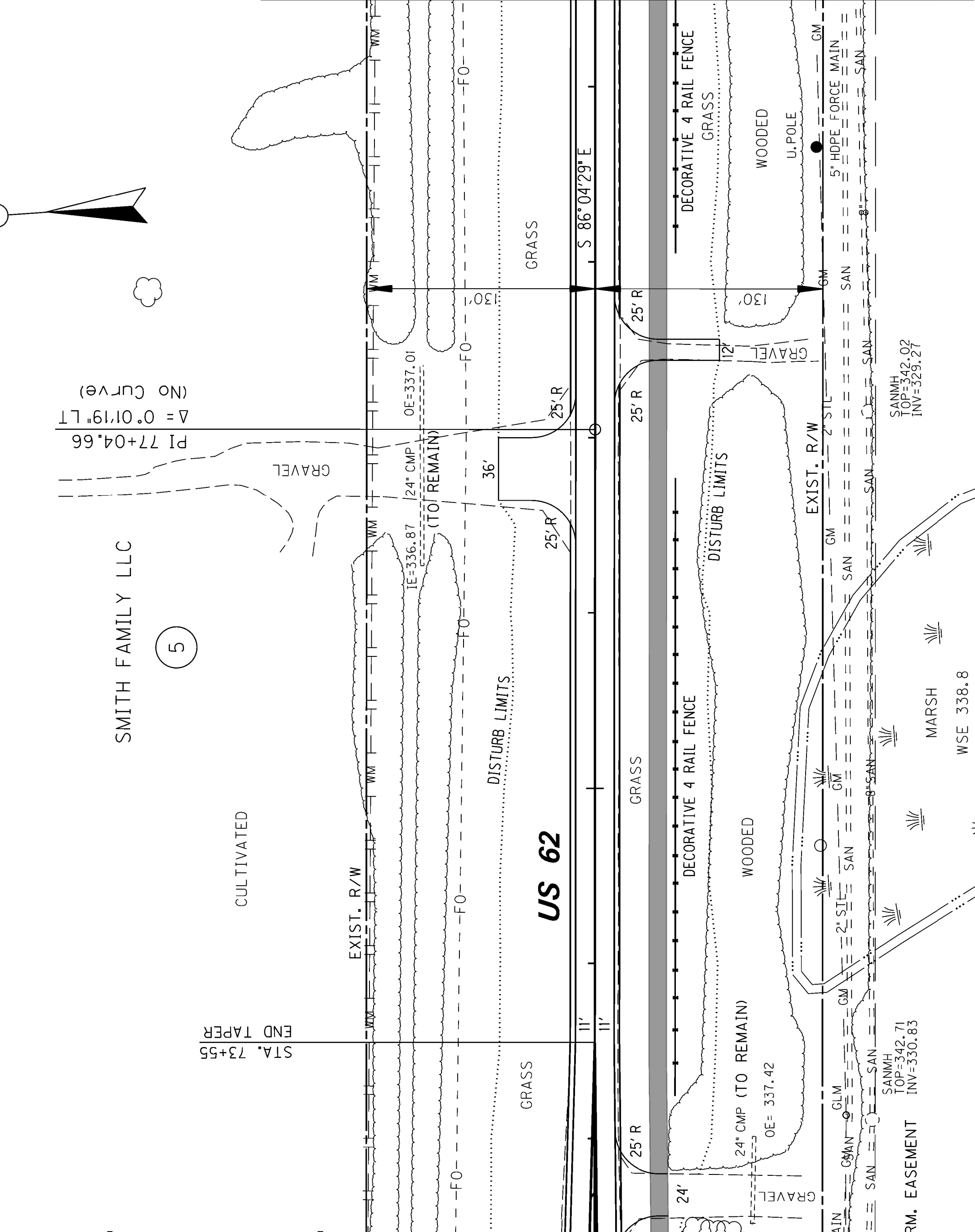
75+00

LT. STA. 76+82 CONSTRUCT 36' ENTRANCE W/
15 TONS OF ASPHALT SURFACE
31 TONS OF ASPHALT BASE
73 TONS OF DGA

SMITH FAMILY LLC

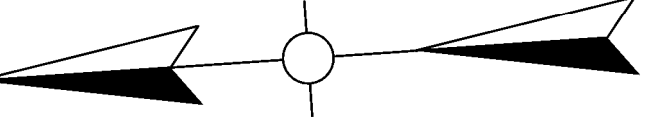
HARRY LEWMAN

(4)



US 62

WOODS



COUNTY OF	ITEM NO.	SHEET NO.
MARSHALL	01-3016.00	R4

REVISION: 5-16-18

RT. STA. 65+41 TO RT. STA. 65+80
CONSTRUCT 50 LF OF DECORATIVE FENCE

RT. STA. 66+47 TO RT. STA. 68+46
CONSTRUCT 215 LF OF DECORATIVE FENCE.

RT. STA. 70+71 TO RT. STA. 71+86
CONSTRUCT 115 LF OF DECORATIVE FENCE.

RT. STA. 72+68 CONSTRUCT 24' ENTRANCE W/
7 TONS OF ASPHALT SURFACE
15 TONS OF ASPHALT BASE
34 TONS OF DGA

RT. STA. 77+50 CONSTRUCT 12' ENTRANCE W/
8 TONS OF ASPHALT SURFACE
17 TONS OF ASPHALT BASE
40 TONS OF DGA

RT. STA. 78+05 TO RT. STA. 79+50
CONSTRUCT 145 LF OF DECORATIVE FENCE.

SCALE: 1"= 50'

US 62
STA 65+50 TO STA. 79+50

DITCH CONSTRUCTION CHART					
SIDE	STA. TO STA.	DESCRIPTION	LINING	QUANTITY	D T
LT	65+50 TO 69+00	V DT.	EC BLANKET	583 SY	1.00 -

LT. STA. 69+66 OVERLAY .67' ENTRANCE W/
20 TONS OF ASPHALT SURFACE

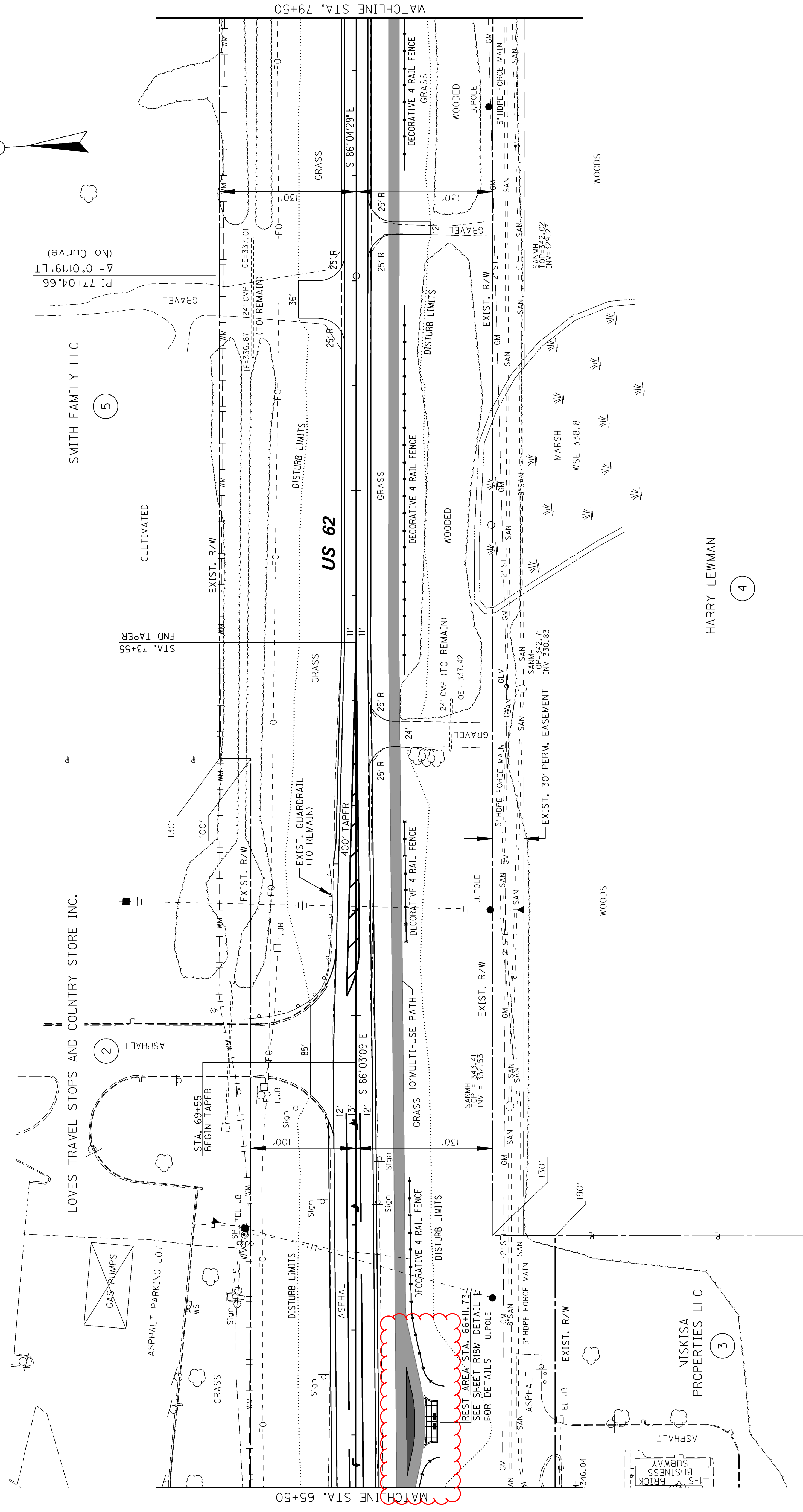
70+00

LT. STA. 76+82 CONSTRUCT 36' ENTRANCE W/
15 TONS OF ASPHALT SURFACE
31 TONS OF ASPHALT BASE
73 TONS OF DGA

75+00

COUNTY OF	ITEM NO.	SHEET NO.
MARSHALL	01-3016.00	R4

REVISION: 5-16-18



LOVES TRAVEL STOPS AND COUNTRY STORE INC.

SMITH FAMILY LLC

NISKISA PROPERTIES LLC

HARRY LEWMAN

RT. STA. 65+41 TO RT. STA. 65+80
CONSTRUCT 50 LF OF DECORATIVE FENCE

RT. STA. 66+47 TO RT. STA. 68+46
CONSTRUCT 215 LF OF DECORATIVE FENCE.

RT. STA. 70+71 TO RT. STA. 71+86
CONSTRUCT 115 LF OF DECORATIVE FENCE.

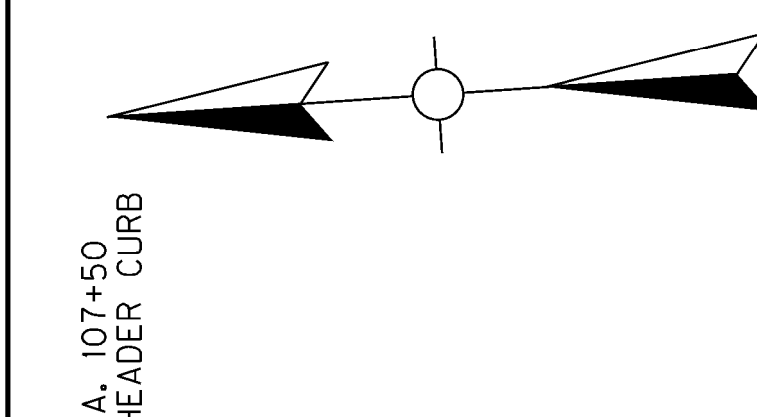
RT. STA. 72+68 CONSTRUCT 24' ENTRANCE W/
7 TONS OF ASPHALT SURFACE
15 TONS OF ASPHALT BASE
34 TONS OF DGA

RT. STA. 77+50 CONSTRUCT 12' ENTRANCE W/
8 TONS OF ASPHALT SURFACE
17 TONS OF ASPHALT BASE
40 TONS OF DGA

RT. STA. 78+05 TO RT. STA. 79+50
CONSTRUCT 145 LF OF DECORATIVE FENCE.

SCALE: 1"= 50'

US 62
STA 65+50 TO STA. 79+50



LT. STA. 103+85.79 TO LT. STA. 107+50
CONSTRUCT 364.21 LF OF LIP HEADER CURB

LT. STA. 102+03.60 CONSTRUCT ENTRANCE 36' W/
22 TONS OF ASPHALT SURFACE
63 TONS OF ASPHALT BASE
110 TONS OF DGA

LT. STA. 102+32 TO LT. STA. 107+50
CONSTRUCT 548 LF OF
STANDARD CURB AND GUTTER

LT. STA. 102+32 TO LT. STA. 107+50
CONSTRUCT 330 SY OF SOD
BEHIND CURB AND GUTTER.

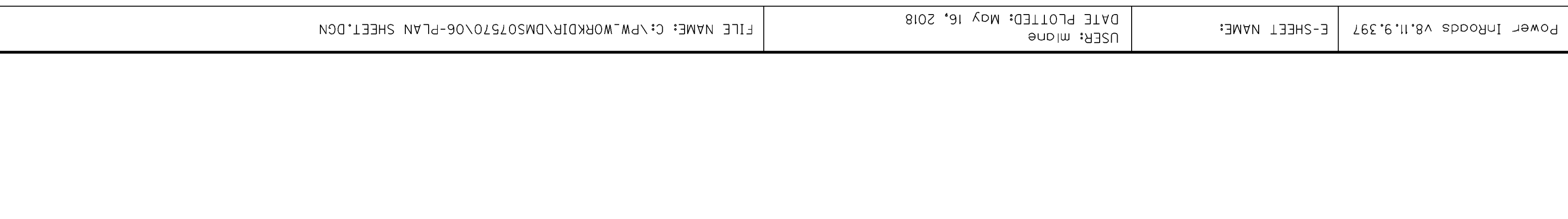
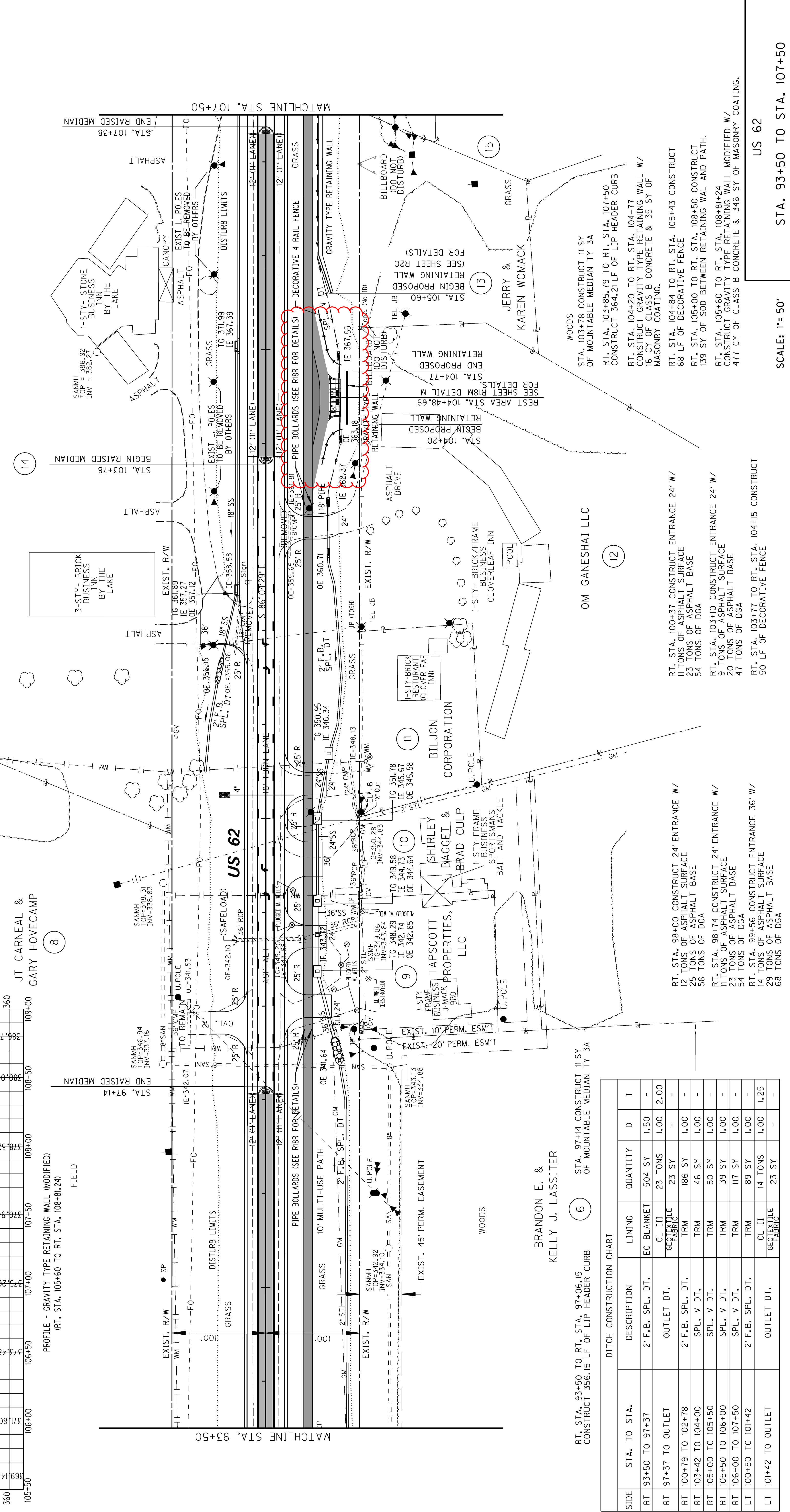
STA. 98+70.94 SAFELOAD 65 LF OF
EXISTING 36" PIPE

LT. STA. 97+82 CONSTRUCT 24' ENTRANCE W/
10 TONS OF ASPHALT SURFACE
27 TONS OF ASPHALT BASE
48 TONS OF DGA

LT. STA. 93+50 TO LT. STA. 97+06.15
CONSTRUCT 356.15 LF OF LIP HEADER CURB

LT. STA. 103+85.79 TO LT. STA. 107+50
CONSTRUCT 364.21 LF OF LIP HEADER CURB

US 62



SIDE	STA. TO STA.	DESCRIPTION	LINING	QUANTITY	D	T
RT	93+50 TO 97+37	2' F.B. SPL. DT.	EC BLANKET	504 SY	1.50	-
RT	97+37 TO OUTLET	OUTLET DT.	CL III GEOTEXTILE FABRIC	23 SY	-	2.00
RT	100+79 TO 102+78	2' F.B. SPL. DT.	TRM	186 SY	1.00	-
RT	103+42 TO 104+00	SPL. V DT.	TRM	46 SY	1.00	-
RT	105+00 TO 105+50	SPL. V DT.	TRM	50 SY	1.00	-
RT	105+50 TO 106+00	SPL. V DT.	TRM	39 SY	1.00	-
RT	106+00 TO 107+50	SPL. V DT.	TRM	117 SY	1.00	-
LT	100+50 TO 101+42	2' F.B. SPL. DT.	TRM	89 SY	1.00	-
LT	101+42 TO OUTLET	OUTLET DT.	CL II GEOTEXTILE FABRIC	14 TONS	1.00	1.25

RT. STA. 93+50 TO RT. STA. 97+06.15
CONSTRUCT 356.15 LF OF LIP HEADER CURB

STA. 97+14 CONSTRUCT 11 SY
OF MOUNTABLE MEDIAN TY 3A

RT. STA. 103+85.79 TO RT. STA. 107+50
CONSTRUCT 364.21 LF OF LIP HEADER CURB

RT. STA. 104+20 TO RT. STA. 104+77
CONSTRUCT GRAVITY TYPE RETAINING WALL W/
16 CY OF CLASS B CONCRETE & 35 SY OF
MASONRY COATING.

RT. STA. 104+84 TO RT. STA. 105+43 CONSTRUCT
68 LF OF DECORATIVE FENCE

RT. STA. 105+00 TO RT. STA. 108+50 CONSTRUCT
139 SY OF SOD BETWEEN RETAINING WAL AND PATH.

RT. STA. 105+60 TO RT. STA. 108+81+24
CONSTRUCT GRAVITY TYPE RETAINING WALL
477 CY OF CLASS B CONCRETE & 346 SY OF
MASONRY COATING.

RT. STA. 100+37 CONSTRUCT ENTRANCE 24' W/
12 TONS OF ASPHALT SURFACE
23 TONS OF ASPHALT BASE
54 TONS OF DGA

RT. STA. 103+10 CONSTRUCT ENTRANCE 24' W/
9 TONS OF ASPHALT SURFACE
20 TONS OF ASPHALT BASE
47 TONS OF DGA

RT. STA. 103+77 TO RT. STA. 104+15 CONSTRUCT
50 LF OF DECORATIVE FENCE

RT. STA. 103+78 CONSTRUCT 11 SY
OF MOUNTABLE MEDIAN TY 3A

RT. STA. 103+85.79 TO RT. STA. 107+50
CONSTRUCT 364.21 LF OF LIP HEADER CURB

RT. STA. 104+20 TO RT. STA. 104+77
CONSTRUCT GRAVITY TYPE RETAINING WALL W/
16 CY OF CLASS B CONCRETE & 35 SY OF
MASONRY COATING.

RT. STA. 104+84 TO RT. STA. 105+43 CONSTRUCT
68 LF OF DECORATIVE FENCE

RT. STA. 105+00 TO RT. STA. 108+50 CONSTRUCT
139 SY OF SOD BETWEEN RETAINING WAL AND PATH.

RT. STA. 105+60 TO RT. STA. 108+81+24
CONSTRUCT GRAVITY TYPE RETAINING WALL
477 CY OF CLASS B CONCRETE & 346 SY OF
MASONRY COATING.

SCALE: 1"= 50'

STA. 93+50 TO STA. 107+50

US 62

BRANDON E. &
KELLY J. LASSITER

DATE PLOTTED: May 16, 2018

FILE NAME: C:\PW\WORKDIR\MS0750\06-PLAN SHEET.DGN

USFR: m1one

E-SHEET NAME:

Power InRoads v8.11.9.137

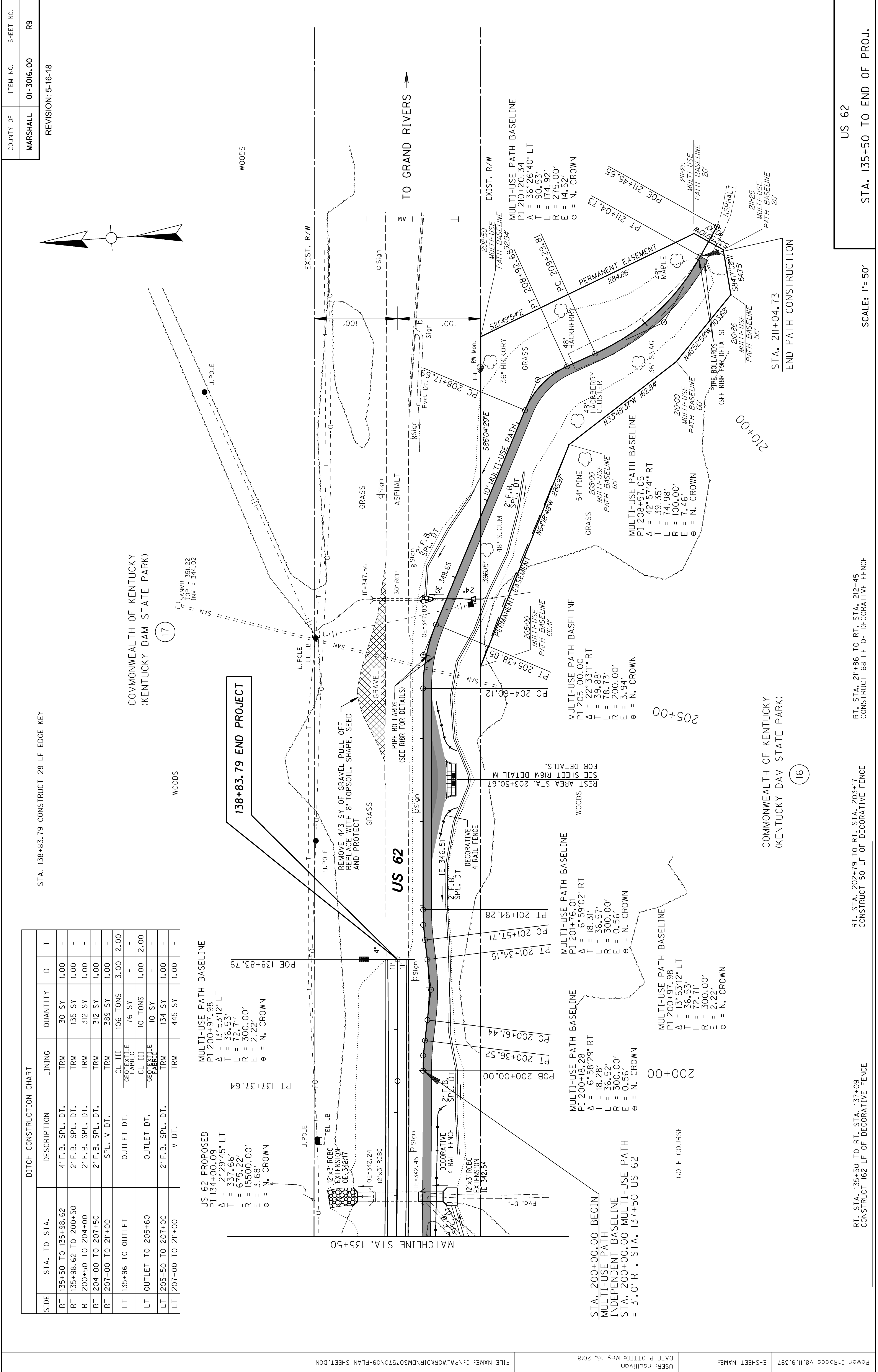
REVISION: 5-16-18

DITCH CONSTRUCTION CHART

SIDE	STA. TO STA.	DESCRIPTION	LINING	QUANTITY	D	T
RT	135+50 TO 135+98.62	4' F.B. SPL. DT.	TRM	30 SY	1.00	-
RT	135+98.62 TO 200+50	2' F.B. SPL. DT.	TRM	135 SY	1.00	-
RT	200+50 TO 204+00	2' F.B. SPL. DT.	TRM	312 SY	1.00	-
RT	204+00 TO 207+50	2' F.B. SPL. DT.	TRM	312 SY	1.00	-
RT	207+00 TO 211+00	SPL. V DT.	TRM	389 SY	1.00	-
LT	135+96 TO OUTLET	OUTLET DT.	CL III GEOTEXTILE FABRIC	106 TONS 76 SY	3.00	2.00
LT	OUTLET TO 205+60	OUTLET DT.	CL III GEOTEXTILE FABRIC	10 TONS 10 SY	1.00	2.00
LT	205+50 TO 207+00	2' F.B. SPL. DT.	TRM	134 SY	1.00	-
LT	207+00 TO 211+00	V DT.	TRM	445 SY	1.00	-

US 62 PROPOSED
 PI 134+00.09
 $\Delta = 2^{\circ}29'45''$ LT
 T = 337.66'
 L = 675.22'
 R = 15500.00'
 E = 3.68'
 e = N. CROWN

MULTI-USE PATH BASELINE
 PI 200+97.98
 $\Delta = 13^{\circ}53'12''$ LT
 T = 36.53'
 L = 72.71'
 R = 300.00'
 E = 2.22'
 e = N. CROWN



138+83.79 END PROJECT

COMMONWEALTH OF KENTUCKY
 (KENTUCKY DAM STATE PARK)

COMMONWEALTH OF KENTUCKY
 (KENTUCKY DAM STATE PARK)

(17)

(16)

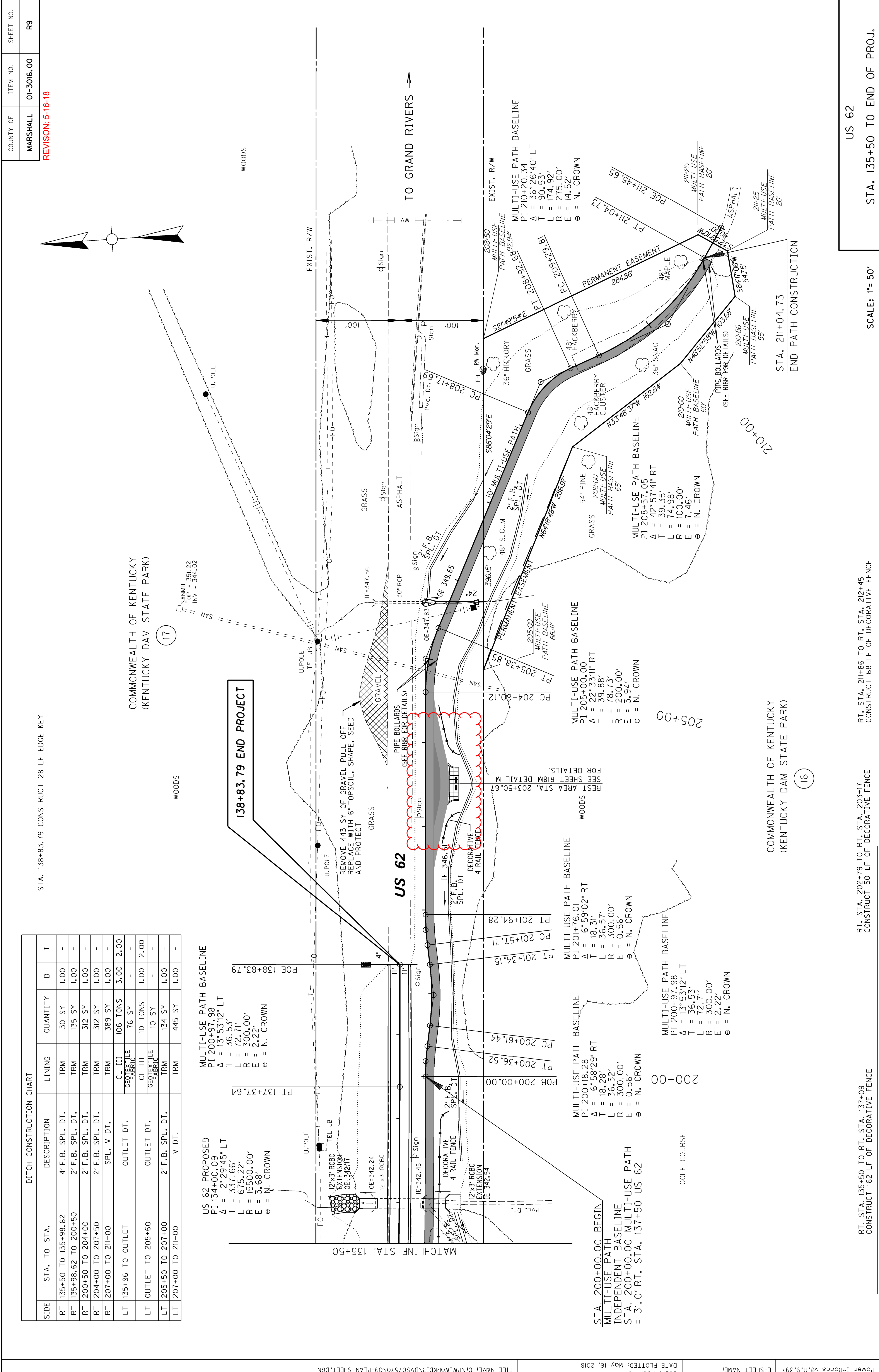
REVISION: 5-16-18

DITCH CONSTRUCTION CHART

SIDE	STA. TO STA.	DESCRIPTION	LINING	QUANTITY	D	T
RT	135+50 TO 135+98.62	4' F.B. SPL. DT.	TRM	30 SY	1.00	-
RT	135+98.62 TO 200+50	2' F.B. SPL. DT.	TRM	135 SY	1.00	-
RT	200+50 TO 204+00	2' F.B. SPL. DT.	TRM	312 SY	1.00	-
RT	204+00 TO 207+50	2' F.B. SPL. DT.	TRM	312 SY	1.00	-
RT	207+00 TO 211+00	SPL. V DT.	TRM	389 SY	1.00	-
LT	135+96 TO OUTLET	OUTLET DT.	CL III GEOTEXTILE FABRIC	106 TONS 76 SY	3.00	2.00
LT	OUTLET TO 205+60	OUTLET DT.	CL III GEOTEXTILE FABRIC	10 TONS 10 SY	1.00	2.00
LT	205+50 TO 207+00	2' F.B. SPL. DT.	TRM	134 SY	1.00	-
LT	207+00 TO 211+00	V DT.	TRM	445 SY	1.00	-

US 62 PROPOSED
 PI 134+00.09
 $\Delta = 2^{\circ}29'45''$ LT
 T = 337.66'
 L = 675.22'
 R = 15500.00'
 E = 3.68'
 e = N. CROWN

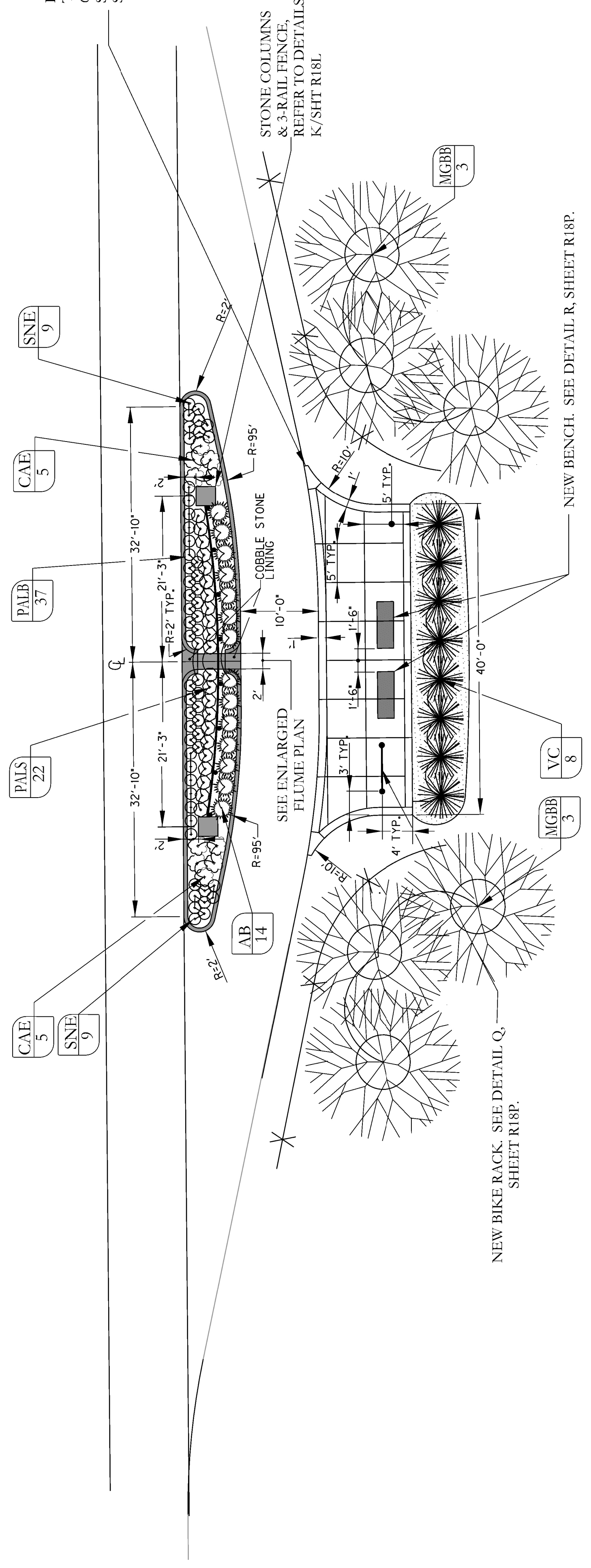
MULTI-USE PATH BASELINE
 PI 200+97.98
 $\Delta = 13^{\circ}53'12''$ LT
 T = 36.53'
 L = 72.71'
 R = 300.00'
 E = 2.22'
 e = N. CROWN



COUNTY OF	ITEM NO.	SHEET NO.
MARSHALL	01-3016.00	R18M

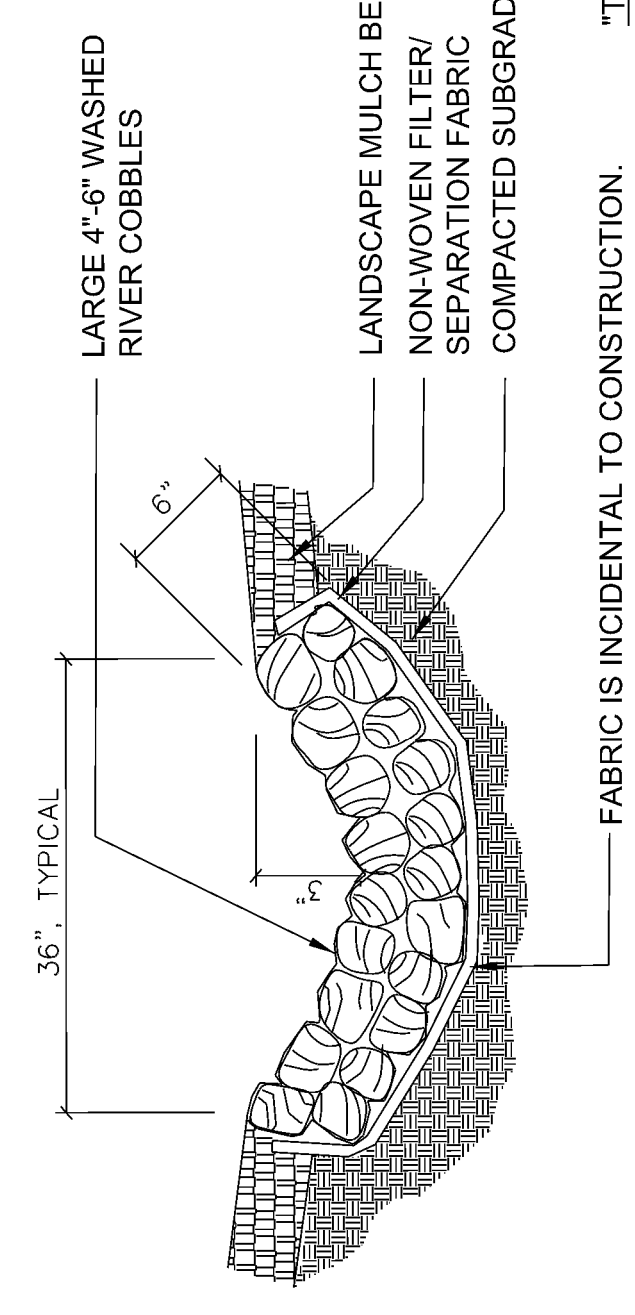
REVISION: 5-16-18

RADIUS CORNER - TRUNCATE END TO 6" WIDE, TYPICAL. - SEE DETAIL U / SHT R18Q, TYPICAL.

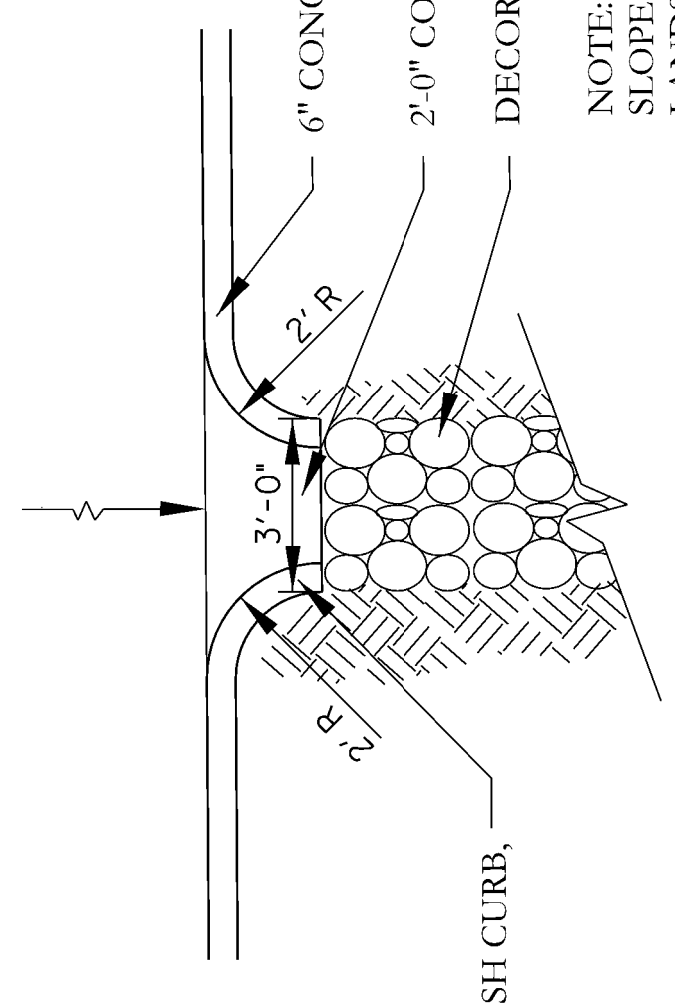


ENLARGED PLAN @ REST AREA w/ FLUME
Scale: 1"=10'

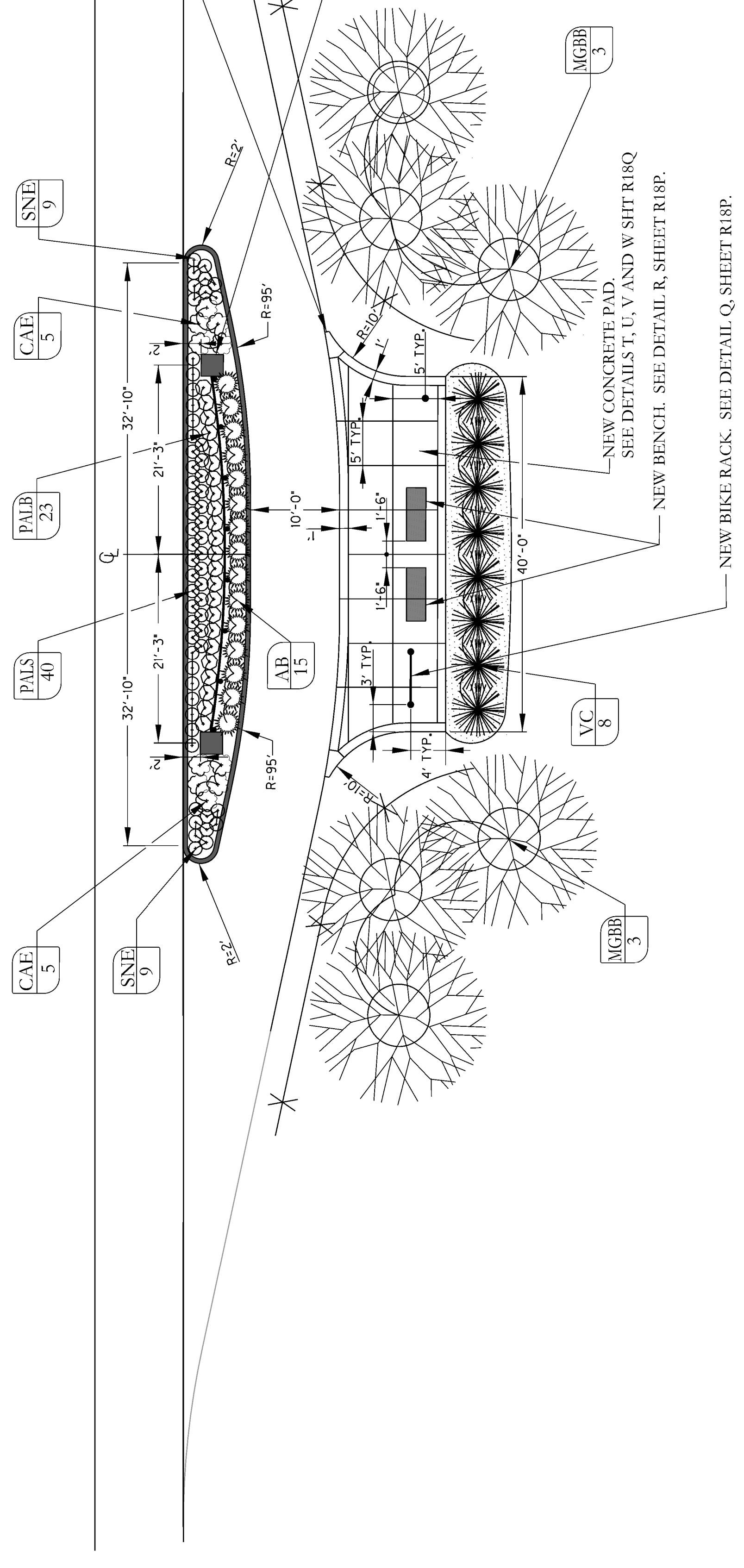
L



ROUNDED RIVER COBBLE CHANNEL SECTION
NOT TO SCALE

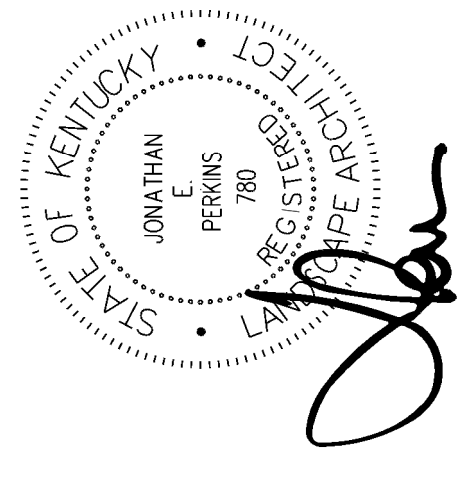


ENLARGED FLUME PLAN



PLANTING DETAIL @ REST AREAS
Scale: 1"=10'

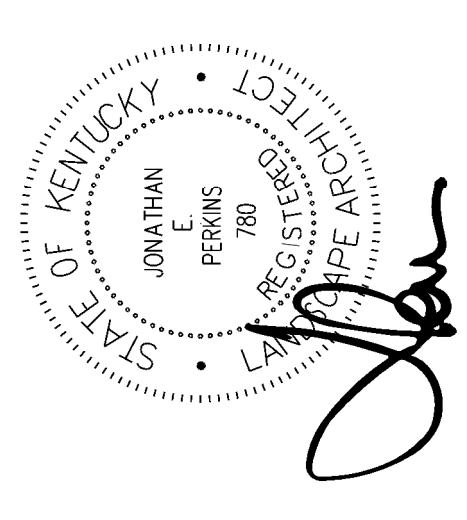
M



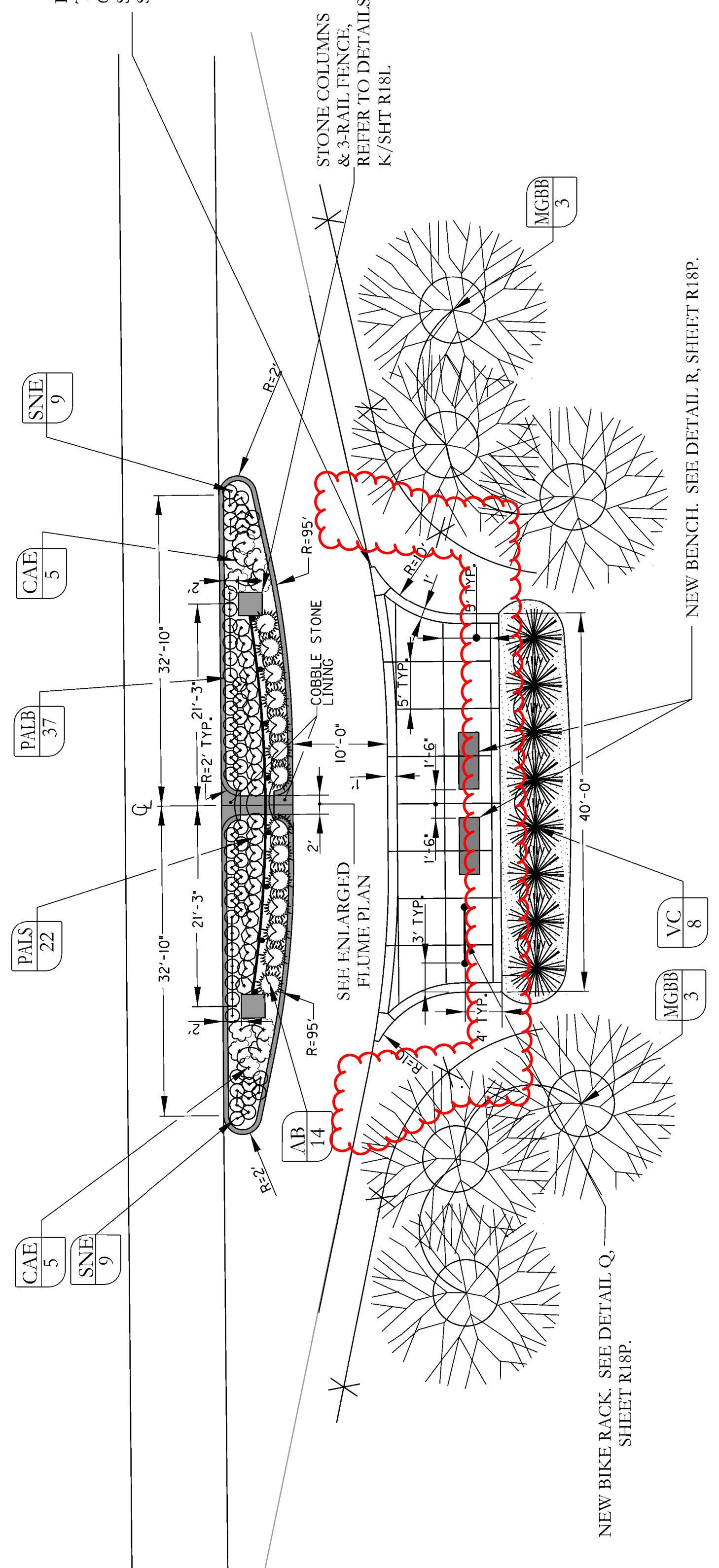
Jonathan E. Perkins

COUNTY OF	ITEM NO.	SHEET NO.
MARSHALL	01-3016.00	R18M

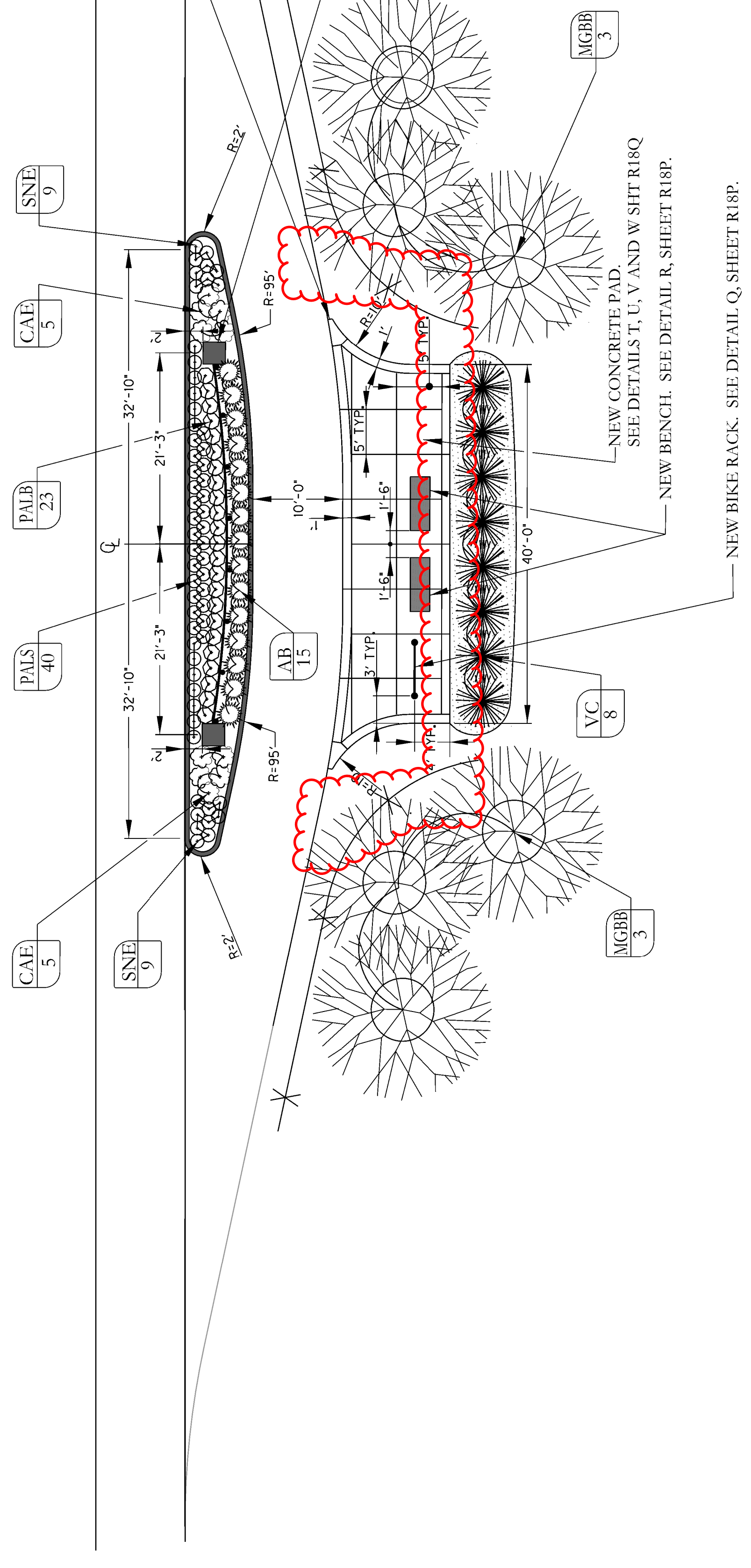
REVISION: 5-16-18



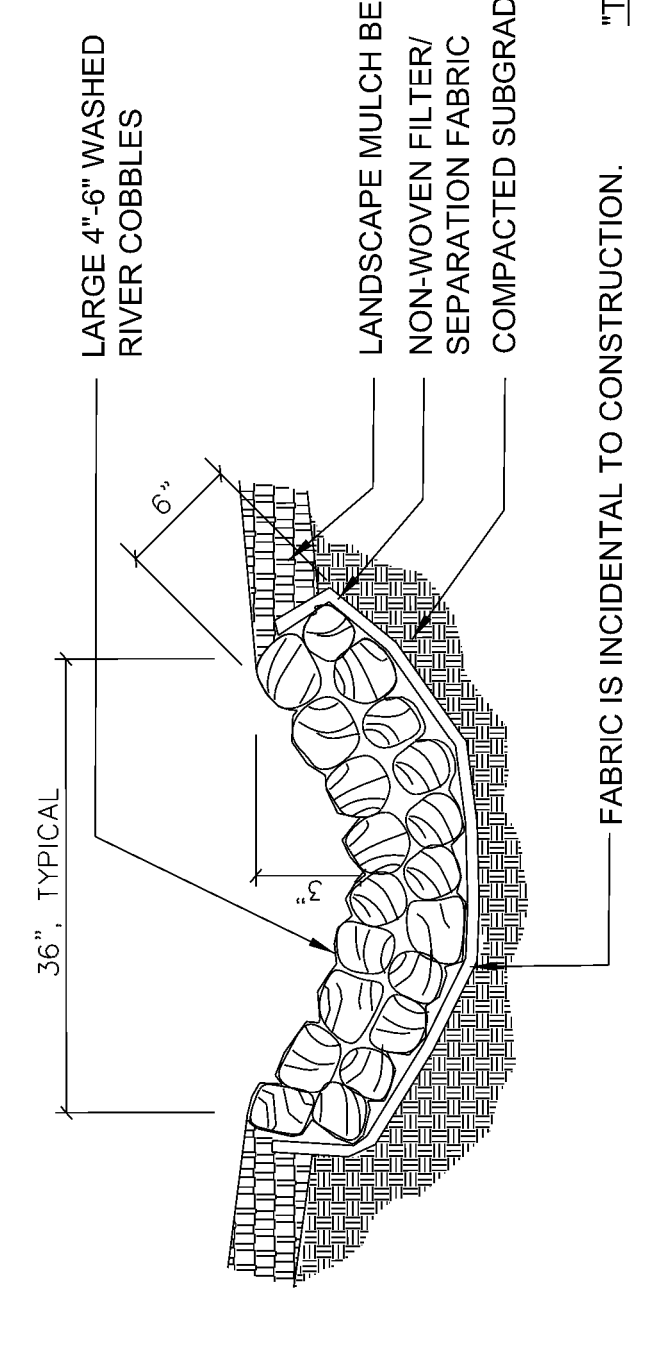
RADIUS CORNER - TRUNCATE END TO 6" WIDE, TYPICAL. SEE DETAIL U/SHT R18Q, TYPICAL.



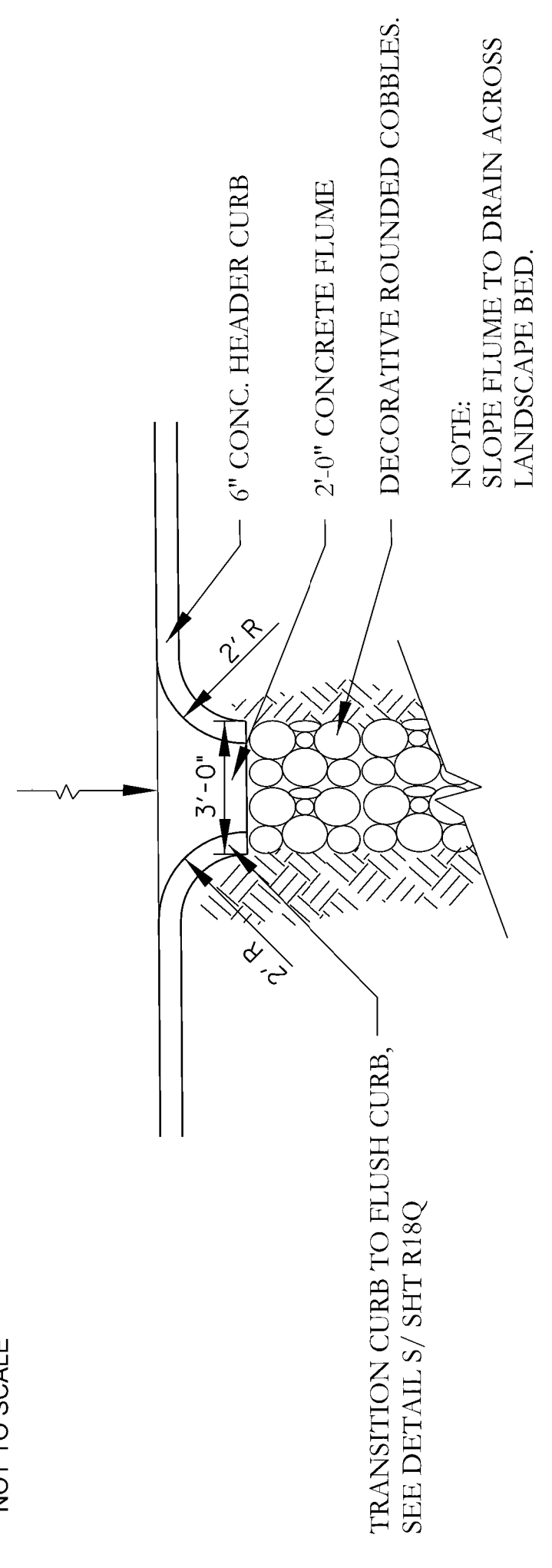
ENLARGED PLAN @ REST AREA w/ FLUME
Scale: 1"=10'



PLANTING DETAIL @ REST AREAS
Scale: 1"=10'

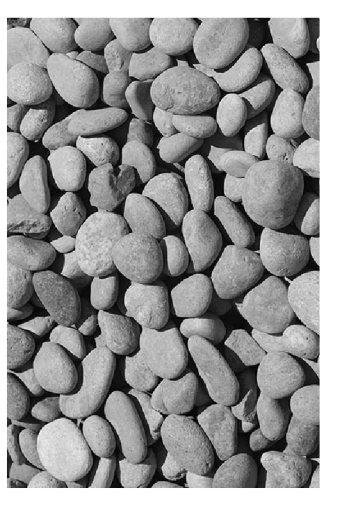


ROUNDED RIVER COBBLE CHANNEL SECTION
NOT TO SCALE



ENLARGED FLUME PLAN

NOTES:
1. SEE SPECIFICATIONS FOR ADDITIONAL REQUIREMENTS
2. THE CONTRACTOR SHALL PROVIDE SAMPLES TO THE LANDSCAPE ARCHITECT FOR ACCEPTANCE/APPROVAL.



"TENNESSEE COBBLE" RIVER COBBLES OR APPROVED EQUAL (4"-6" Diameter)

TRANSITION CURB TO FLUSH CURB, SEE DETAIL S/ SHT R18Q
6" CONC. HEADER CURB
2"-0" CONCRETE FLUME
DECORATIVE ROUNDED COBBLES.
NOTE:
SLOPE FLUME TO DRAIN ACROSS LANDSCAPE BED.

FABRIC IS INCIDENTAL TO CONSTRUCTION.

NEW BENCH. SEE DETAIL R, SHEET R18P.

NEW BIKE RACK. SEE DETAIL Q, SHEET R18P.

RADIUS CORNER - TRUNCATE END TO 6" WIDE, TYPICAL - NO POINTS. SEE DETAIL U/SHT R18Q, TYPICAL.

STONE COLUMNS & 3-RAIL FENCE, REFER TO DETAILS K/SHT R18I.

NEW CONCRETE PAD. SEE DETAILS T, U, V AND W SHT R18Q

NEW BENCH. SEE DETAIL R, SHEET R18P.

NEW BIKE RACK. SEE DETAIL Q, SHEET R18P.

GENERAL NOTES

SPECIFICATIONS: References to the Specifications are to the current edition of the Kentucky Department of Highways Standard Specifications for Road and Bridge Construction including any Supplemental Specifications. All references to the AASHTO Specifications are to the current edition of the AASHTO LRFD Bridge Design Specifications with Interims and AASHTO Guide Specification for Design of Pedestrian Bridges.

DESIGN LOAD AND METHOD: This bridge is designed for a pedestrian live load of 90 psf. **All galvanized concrete members are designed by the load and resistance factor design (LRFD) method as specified in the current AASHTO Specifications.**

REINFORCEMENT: Dimensions shown from the face of concrete to bars are to center of bars unless otherwise shown. Spacing of bars is from center to center of bars. Clear distance to face of concrete is 2", unless otherwise noted. Epoxy coat bars designated by suffix (e) in accordance with Section 811.10 of the Standard Specifications. Use stirrup bend diameters for bars designated by suffix (s) in a Bill of Reinforcement.

BEVELED EDGES: Bevel all exposed edges 3/4", unless otherwise noted.

SHOP DRAWINGS: When any changes in the design plans are proposed by the fabricator or supplier, the shop drawings reflecting these changes shall be submitted to the engineer through the contractor. Contrary to the specifications, shop drawings, with no changes requiring review only shall be submitted directly from the fabricator or supplier to the engineer.

SLOPE PROTECTION: Slope protection shall be in accordance with the Plans and Specifications.

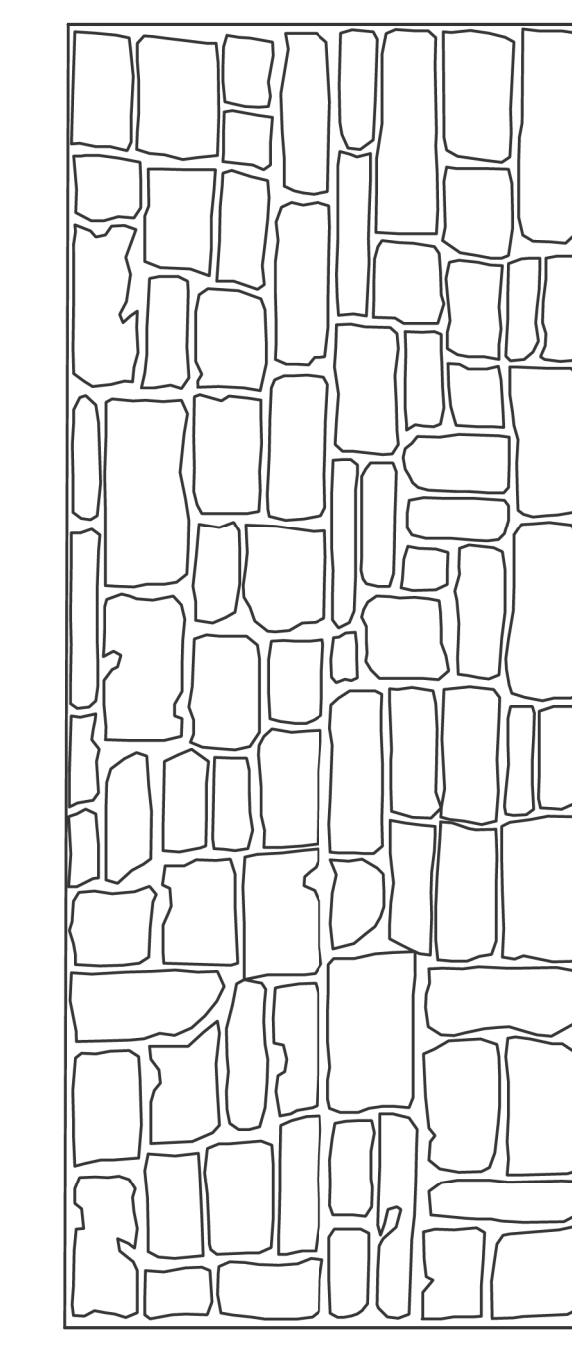
DIMENSIONS: Dimensions are for a normal temperature of 60 degrees Fahrenheit. Layout dimensions are horizontal measurements.

STANDARD DRAWINGS: Refer to Kentucky Department of Highways Standard Drawings.

MATERIALS FOR ALUMINUM PEDESTRIAN BRIDGE: All aluminum primary structural members are to be 6061-T6 alloy for its high strength and corrosion resistance. Secondary aluminum members are to be 6000 series aluminum for corrosion resistance. All aluminum members shall be welded using 5356 aluminum filler wire in accordance with AWS D1.2

COMPLETION OF THE STRUCTURE: The contractor is required to complete the structure in accordance with the plans and specifications. Material, labor or construction operations not otherwise specified are to be included in the bid item most appropriate for the work involved. This may include cofferdams, shoring, excavation, backfilling, removal of all or parts of existing structures, phased construction, maintenance of traffic, incidental materials, labor, etc. to complete the structure.

TEMPORARY SHEETING AND/OR SHORING: Temporary sheeting or shoring/cofferdams and/or a dewatering method may be required during footing installation. Include any cost in the bid for Foundation Preparation.



ASHLAR STONE RUSTICATION ARCHITECTURAL TREATMENT

Note:
Architectural treatment is to be applied to the vertical surface of the front face of abutments and wingwalls. Cost shall be incidental to Concrete Class 'A'. The form liner shall be Ashlar Stone Pattern equal to Sika Greensteak #330.

* Provide 3/2" cl. to face of concrete (includes 1/2" rustication depth)

ASHLAR STONE RUSTICATION DETAIL

The following abbreviations may have been used in these plans:

- B.F. Back Face
- BRG. Bearing
- CtoC Center to Center
- C.E. Current Edition
- C.Y. Cubic Yard
- CL Center Line
- CL Clear
- DWG. Drawing
- E.F. Each Face
- EL. Elevation
- ELEV. Elevation
- EO. Equal
- EST. Estimate
- EXT. Exterior
- F.F. Front Face
- FT. Feet
- I.D. Inside Diameter
- IN. Inch
- LBS. Pounds
- O.D. Outside Diameter
- PC Point of Curve
- PERP. Perpendicular
- PI Point of Intersection
- PPC Precast Pre Stressed Concrete
- PSI Pounds per Square Inch
- PT Points of Tangent
- R Radius
- REQ'D. Required
- RR Railroad
- SHLD. Shoulder
- SPA. Spaces
- STA. Station
- STD. Standard
- STR. Straight
- TYP. Typical
- VERT. Vertical
- W.P. Working Point

PEDESTRIAN BRIDGE DESIGN LOADS (PER BEARING)		
Load Type	P (kips)	LATERAL (kips)
Unfactored - Dead Load (DC+DW)	14.75	---
Unfactored - Ped. Live Load (PLU)	15.75	---
Unfactored - Vehicle Live Load (LLV)	5.00	---
Unfactored - Horizontal Wind (WSp)	+/- 2.565	7.405

ITEM NUMBER
01-3016.00

REVISION	DATE
DESIGNED BY: C. Vollmer	CHECKED BY: B. Poiter
DETAILED BY: C. Vollmer	B. Poiter
Commonwealth of Kentucky DEPARTMENT OF HIGHWAYS	
COUNTY MARSHALL	
ROUTE US 62	CYPRESS CREEK
GENERAL NOTES	
PREPARED BY	
BFW ENGINEERING & TESTING	
SHEET NO. 92	
DRAWING NO. 27739	